
SFINCS Documentation

Release 2.0.3_Cauberg

Tim Leijnse

Dec 22, 2023

INTRODUCTION:

1	Acknowledgements	3
1.1	Introduction	3
1.1.1	Introduction to SFINCS	3
1.1.2	Application areas	4
1.1.3	Applied international projects	8
1.1.4	Publications	12
1.2	Developments	13
1.2.1	Development status	13
1.2.2	Known issues	13
1.2.3	Releases Changelog	13
1.2.4	Recent advancements in accuracy: subgrid mode	16
1.2.5	Recent advancements in speed: GPU enabled	18
1.3	Setting up models	18
1.3.1	Introduction	18
1.3.2	Delft Dashboard	18
1.3.3	Open Earth Tools	18
1.3.4	HydroMT-SFINCS	19
1.4	Executable	20
1.5	Compiling yourself	20
1.6	Running SFINCS	20
1.6.1	On windows (standard)	20
1.6.2	On linux	21
1.6.3	Using Docker	21
1.6.4	Using Singularity	22
1.7	Courses learning SFINCS	22
1.8	Questions and support	22
1.9	Contributing	23
1.9.1	Documentation	23
1.9.2	Code	23
1.10	User manual - general	23
1.10.1	Overview	23
1.10.2	Example of sfincs.inp	23
1.10.3	Domain	25
1.10.4	Model settings	36
1.11	User manual - forcing	39
1.11.1	Overview	39
1.11.2	Water levels	40
1.11.3	Waves	41
1.11.4	Discharges	42
1.11.5	Meteo	44

1.12	User manual - structures	49
1.12.1	Overview	49
1.12.2	Structures	50
1.13	Input parameters	54
1.13.1	Parameters for model input	54
1.13.2	More parameters for model input (only for advanced users)	60
1.13.3	Parameters for model output	63
1.14	Input files	67
1.14.1	Domain	68
1.14.2	Forcing - Water levels and waves	73
1.14.3	Forcing - Discharges	74
1.14.4	Forcing - Meteo	75
1.14.5	Structures	77
1.15	Output messages	78
1.15.1	Interpreting the information on the screen	78
1.15.2	Possible error messages and possible solutions	80
1.16	Output description	81
1.16.1	Parameters netcdf file global (sfincs_map.nc)	81
1.16.2	Parameters netcdf file observation points (sfincs_his.nc)	84

‘SFINCS’ is Deltares’ new reduced-complexity model designed for super-fast modelling of compound flooding in a dynamic way! This online documentation describes the input files and parameters of the SFINCS model (Super-Fast INundation of CoastS), model output and how to get started.



Contact:

Mail ‘sfincs@deltares.nl’ for questions that are not answered yet by this documentation.

License:

SFINCS has been made freely available open source for you to use under the standard GNU GPL-v3.0 license (see: <https://choosealicense.com/licenses/gpl-3.0/> for more information).

Quick information:

- For an introduction of the SFINCS model see the introduction journal publication, see: <https://doi.org/10.1016/j.coastaleng.2020.103796>
- For more general information about SFINCS and Deltares, see: <https://deltares.nl/en/software/sfincs/>
- To download a free pre-compiled windows executable of SFINCS, see: <https://download.deltares.nl/en/sfincs>
- To collaborate with us on improving the model, see: <https://github.com/Deltares/SFINCS>
- To raise possible issues with the latest version of the model, see: <https://github.com/Deltares/SFINCS/issues>
- For a background on SFINCS, application areas, performed international projects and publications, see “Introduction” in this manual.

Outline manual: This manual is outlined containing the following parts, see also the overview bar on the left:

- Introduction
- Developments
- Getting started
- User manual
- Input parameters and files
- Model output and messages

ACKNOWLEDGEMENTS

SFINCS is developed at Deltares and initiated by Maarten van Ormondt. This documentation is developed and maintained by Tim Leijnse and Roel de Goede.

1.1 Introduction

1.1.1 Introduction to SFINCS

What is SFINCS?

SFINCS (Super-Fast Inundation of CoastS) is a reduced-complexity model capable of simulating compound flooding with a high computational efficiency balanced with an adequate accuracy. In SFINCS a set of momentum and continuity equations are solved with a first order explicit scheme based on Bates et al. (2010). Traditionally SFINCS neglects the advection term (SFINCS-LIE) which generally justified for sub-critical flow conditions. For super-critical flow conditions or when modelling waves, the advection term needs to be solved. For this purpose, the SFINCS-SSWE version can be used (including advection). For more information see Leijnse et al. (2020): <https://doi.org/10.1016/j.coastaleng.2020.103796>

Why SFINCS?

Compound flooding during tropical cyclones and other extreme events result in tremendous amounts of property damage and loss of life. Early warning systems and multi-hazard risk analysis can reduce these impacts. However, large numbers of computations need to be run in a probabilistic approach and in a short time due to uncertainties in the meteorological forcing. Current modelling approaches are either fast but too simple (bathtub approach) or models are very accurate but too slow (e.g. Delft3D, XBeach). SFINCS balances a high computational efficiency with adequate accuracy. Therefore the model is very appropriate to either to model a large stochastic set of scenarios, run the same model on a higher resolution or model larger scales. Thereby, one can use it as a quickscan tool to quickly test possible adaptation and mitigation measures to flooding. The scope of the model is therefore different than other models in Deltares' modelling suite. When very high-detailed simulations are needed with a lot of detailed features (or including morphology, salinity etc.), one can use the Delft3D FM Suite, see: <https://www.deltares.nl/en/software/delft3d-flexible-mesh-suite/>



Fig. 1.1: The goal of SFINCS: speed! (Icon made by <https://www.flaticon.com/authors/vectors-market>)

Compound flooding?

Compound flooding is described as events occurring in coastal areas where the interaction of high sea levels, large river discharges and local precipitation causes (extreme) flooding (Wahl et al., 2015). To simulate compound flooding events, a model needs to be able to model all these types of forcings. Therefore, SFINCS includes fluvial, pluvial, tidal, wind- and wave-driven processes!

1.1.2 Application areas

Coastal model

A SFINCS model in coastal regions can be forced with marine forcings like tides, storm surge, local wind setup and wave driven processes. Generally a model is setup with the offshore boundary in the swash zone, good practice is in about 2 meters water depth. In SFINCS it is possible to distinguish cells that are made inactive in the computation so it will not slow your model down (in this case everywhere deeper than 2m water depth). In some cases local rainfall might be relevant too for a coastal model.

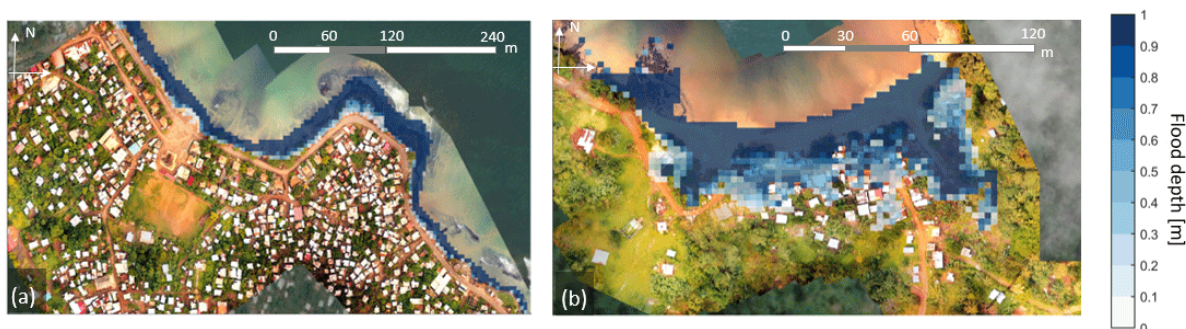


Fig. 1.2: SFINCS model for Sao Tome en Principe, figure from: <https://doi.org/10.5194/nhess-20-2397-2020>

Coral reef model

SFINCS models have also been setup in coral reef type environments, where individual waves are forced to compute wave-driven flooding. This generally has a large contribution to flooding for Small Island Developing States (SIDS) or other coasts/islands with coral reef type coasts.

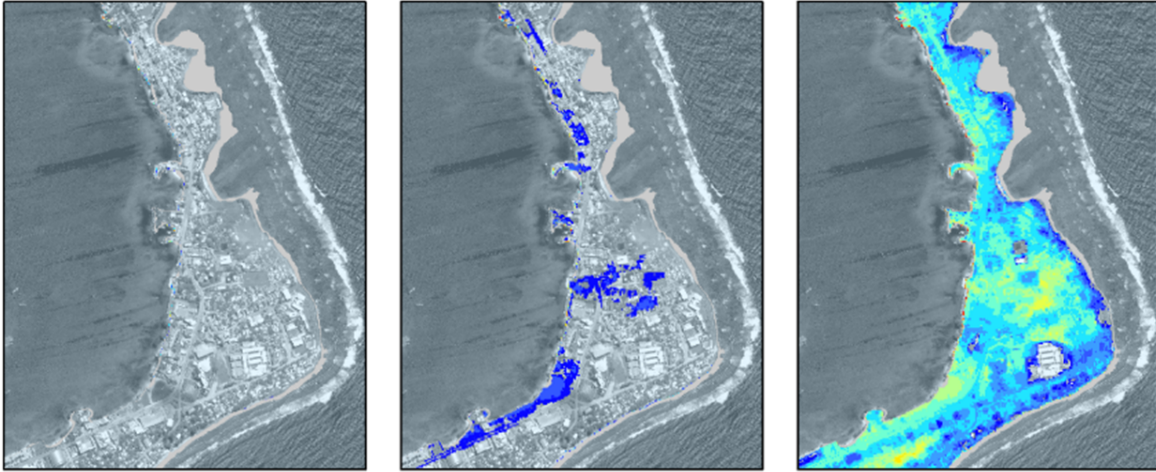


Fig. 1.3: SFINCS model for Majuro.

Tsunami model

As an additional type of coastal model, SFINCS has also been used for modelling tsunami's. Generally this would be an overland model forced with a tsunami wave as computed by an offshore hydrodynamic model. However, in the paper of Robke et al. 2021 SFINCS was also used for the first time to calculate the offshore propagation in a very short amount of time too. Get in touch to hear more about possibilities for tsunami modelling with SFINCS.

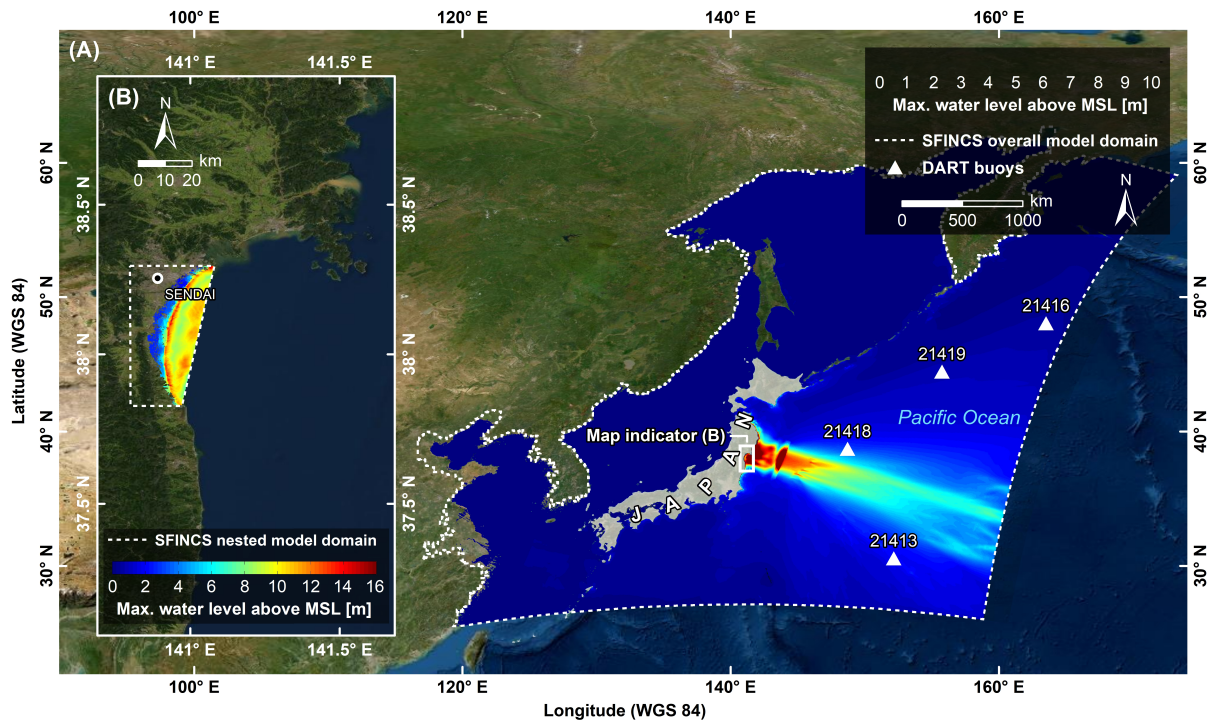


Fig. 1.4: Overland and offshore SFINCS models modelling the 2011 Tohoku tsunami near Japan, figure from: <https://doi.org/10.3390/jmse9050453>

Storm surge model

Since speed is wanted everywhere, also tests have been done to let SFINCS model offshore storm surge during tropical cyclones. Get in touch to hear more about possibilities for storm surge modelling with SFINCS.

Riverine model

For inland riverine types of environments, boundary conditions are generally different than for coastal models. Generally at the upstream end of rivers, one can provide discharge points with discharge time-series. At the downstream end of rivers, water level time-series need to be specified, which in case of sub-critical flow conditions will influence the flow upstream. Additionally, besides the general river discharge, local rainfall adding water to the river can be very relevant too.

Urban model

For urban environments the local situation of varying land use conditions can heavily influence the local flow. Therefore spatially varying input of manning roughness and infiltration is possible. The curve number method of infiltration will distinguish what part of falling precipitation can infiltrate or will run-off. To test out the effect of interventions, it is possible to insert different types of structures into the SFINCS model. These can be thin dams, levees, sea walls, simple drainage pumps or culverts.



Fig. 1.5: SFINCS model for Vientiane, Laos.

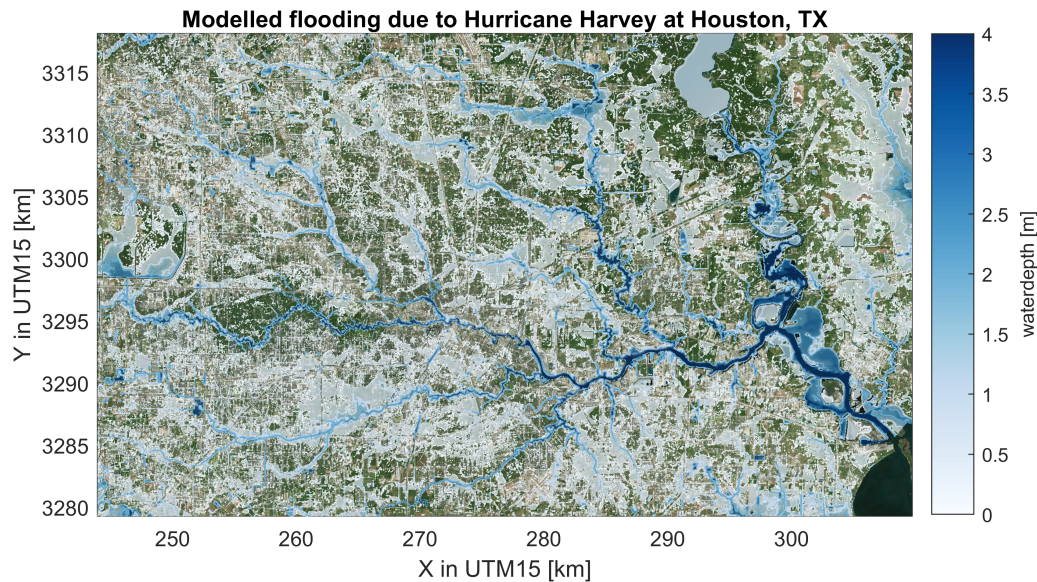


Fig. 1.6: SFINCS model for Houston, TX, during Hurricane Harvey (2017)

Flash flood model

In recent tests, SFINCS has also been used to model flash floods. In these events, a short but intense rainfall event falls onto a domain and together with a steep profile can lead to significant water depths and flow velocities. Get in touch to hear more about possibilities for fast flash-flood modelling with SFINCS.

Compound flooding model

In a compound flooding model, all relevant types of forcing from either coastal, coral, riverine or urban models can be combined into 1 domain. Hereby the joint effect of multiple flood drivers that can enhance flooding can be taken into account.

1.1.3 Applied international projects

SFINCS has been applied in these international projects, with attached links to news articles:

- Modelling of urban flooding and adaptation measures in the USA (<https://www.deltares.nl/en/news/development-community-oriented-decision-support-tool-compound-flood-events-us/>)
- Modelling coastal driven flooding at Beira, Mozambique (<https://www.deltares.nl/en/news/dutch-mozambican-consortium-to-protect-beira-against-coastal-flooding/>)
- Modelling sea level rise and storm driven flooding at 18 countries in the Caribbean (<https://openknowledge.worldbank.org/handle/10986/36417>)
- Modelling multi-hazard driven flooding for the atoll of Majuro in the Marshall islands (<https://storymaps.arcgis.com/stories/8c715dcc5781421ebff46f35ef34a04d>)
- Modelling compound flooding along the whole US Southeast coast (<https://www.deltares.nl/app/uploads/2021/10/RD-Highlights-2021.pdf>)

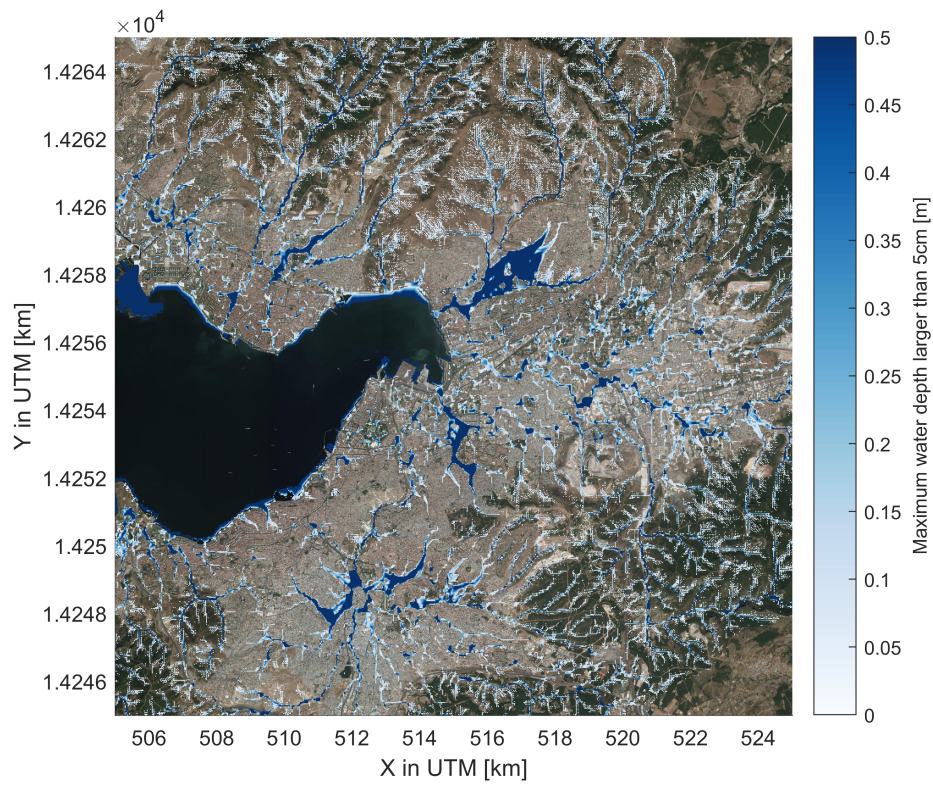


Fig. 1.7: SFINCS model for Izmir, Turkey

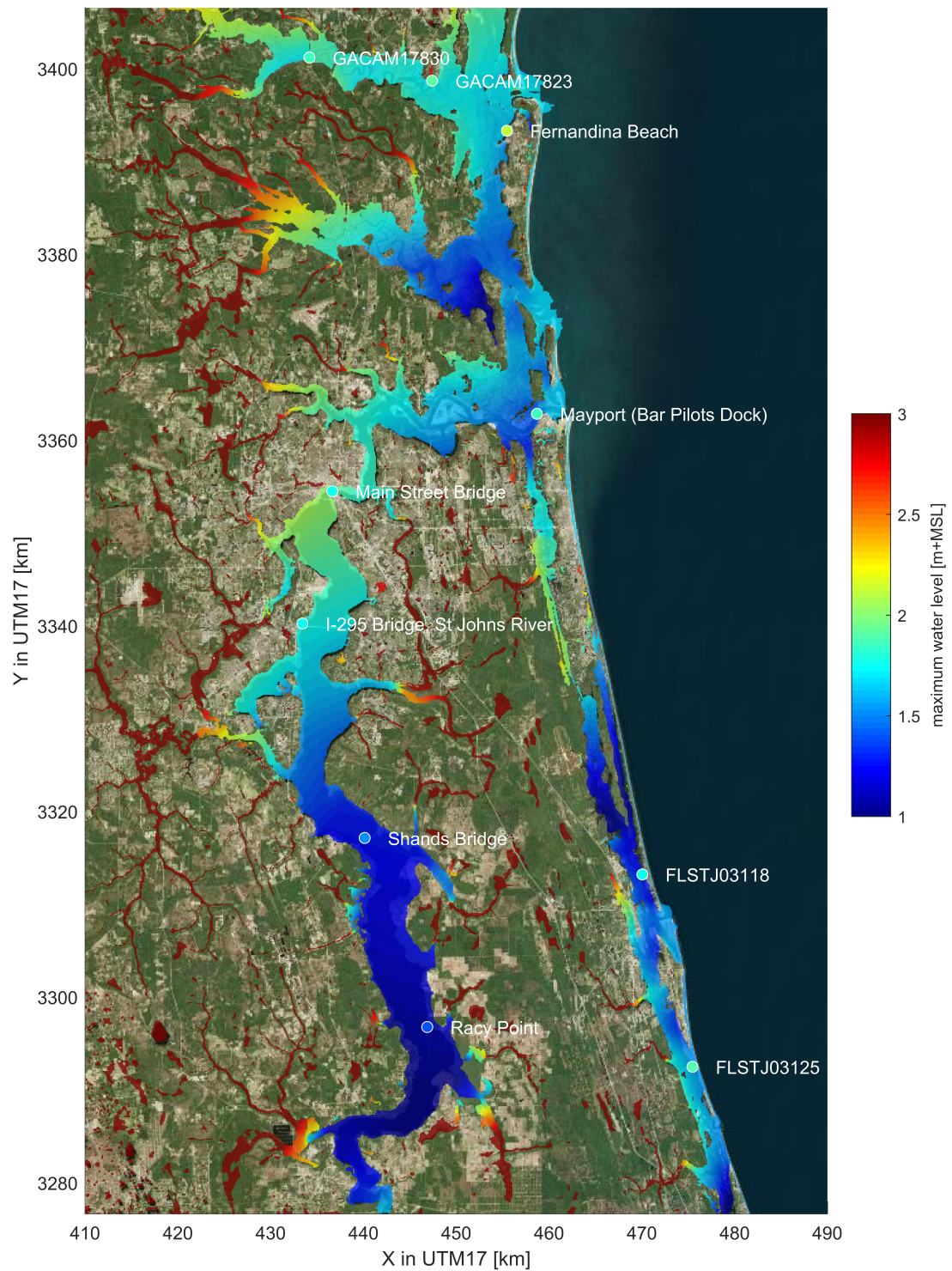


Fig. 1.8: SFINCS model for Jacksonville, FL, during Hurricane Irma (2017), figure from: <https://doi.org/10.1016/j.coastaleng.2020.103796>

- Modelling coastal flooding for the entire country of Denmark by the Danish Coastal Authority for the EU Floods Directive (https://www.youtube.com/watch?v=TbzTC82ijyU&t=15s&ab_channel=Deltares) (https://specials.deltares.nl/impact_report_2023/estimating_flood_impacts)

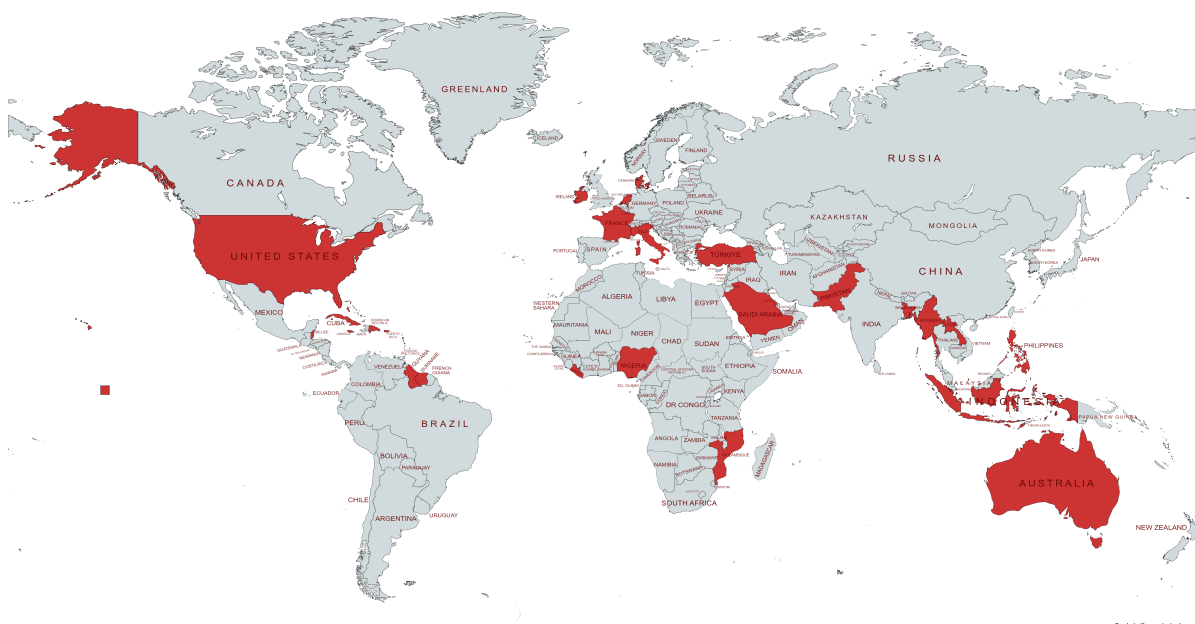


Fig. 1.9: Overview of countries globally where SFINCS has been used, including all SIDS

SFINCS has been applied (or still is) in multiple other international projects:

- Modelling compound flooding for the islands of Sao Tome en Principe
- Modelling tropical cyclone and sea level rise driven flooding in polders of Bangladesh
- Modelling compound flooding at Monrovia, Liberia
- Modelling sea level rise driven flooding at all the islands of the Marshall Islands
- Modelling wave and groundwater -driven flooding across the Puget Sound, US West coast
- Modelling wave-driven flooding at Miami, Florida
- Modelling urban flooding in 100 global cities
- Modelling sea level rise and storm driven flooding for all SIDS globally
- Modelling coastal flooding in Denmark
- Modelling wave-driven flooding in Cuba
- Modelling flash-floods in Turkey
- Modelling large scale compound flooding in Australia in a Delft-FEWS early warning system
- Modelling wave-driven flooding on coral reeflined coasts of Puerto Rico
- Modelling coastal and riverine flooding in Indonesia
- Modelling wave-driven flooding in the Philippines
- Modelling of urban flooding and adaptation measures in Ireland
- Modelling emergency response of flooding in Pakistan and Nigeria during the 2022 floods

1.1.4 Publications

There have been various journal publications and conference posters where SFINCS has been used and/or validated:

- Introduction paper of SFINCS: “Modeling compound flooding in coastal systems using a computationally efficient reduced-physics solver: including fluvial, pluvial, tidal, wind- and wave-driven processes”. Leijnse et al. (2021). <https://doi.org/10.1016/j.coastaleng.2020.103796>.
- “Uncertainties in coastal flood risk assessments in small island developing states” - Parodi et al. (2020) <https://nhess.copernicus.org/articles/20/2397/2020/>
- “Hindcast of Pluvial, Fluvial, and Coastal Flood Damage in Houston, Texas during Hurricane Harvey (2017) using SFINCS”. Sebastian et al. (2021). Sebastian et al. <https://doi.org/10.1007/s11069-021-04922-3>
- “Rapid Assessment of Tsunami offshore propagation and Inundation with D-FLOW Flexible Mesh and SFINCS for the 2011 Tohoku Tsunami in Japan”: Röbbke et al. (2021) <https://doi.org/10.3390/jmse9050453>
- “Efficient and accurate modeling of wave-driven flooding on coral reef-lined coasts: Case Study of Majuro Atoll, Republic of the Marshall Islands”. Bertoneclj et al. (2021). <https://doi.org/10.5194/egusphere-egu21-5418>
- “Multilevel multifidelity Monte Carlo methods for assessing coastal flood risk”. Clare et al. (2022) <https://doi.org/10.5194/nhess-22-2491-2022>
- “A globally-applicable framework for compound flood hazard modeling”. Eilander et al. (2022) <https://doi.org/10.5194/egusphere-2022-149>
- “Developing large scale and fast compound flood models for Australian coastlines”. Leijnse et al. (2022). ‘International Conference on Coastal Engineering 2022, Sydney’. <https://doi.org/10.9753/icce.v37.management.49>.
- “Developing a real-time data and modelling framework for operational flood inundation forecasting in Australia”. De Kleermaeker et al. (2022). <https://search.informit.org/doi/abs/10.3316/informit.916755150845355>
- “Flooding at the Fringe: A Reduced-physics Model for Assessing Compound Flooding from Pluvial, Fluvial, and Coastal Hazards”. Grimley et al. (2022). <https://ui.adsabs.harvard.edu/abs/2022AGUFMNH36A..03G/abstract>
- “Large-Scale Operational Forecasting with the Compound Flood Model SFINCS”. Van Ormondt et al. (2022). In Fall Meeting 2022. AGU.
- “Tropical cyclones or extratropical storms: What drives the compound flood hazard, impact and risk for the US Southeast Atlantic coast?” Nederhoff et al. (2023). <https://eartharxiv.org/repository/view/5123/>.
- “Dynamic modeling of coastal compound flooding hazards due to tides, extratropical storms, waves, and sea-level rise: a case study in the Salish Sea, Washington (USA)”. Nederhoff et al. (2023). <https://eartharxiv.org/repository/view/5140/>
- “RAPID MODELING OF COMPOUND FLOODING ACROSS BROAD COASTAL REGIONS AND THE NECESSITY TO INCLUDE RAINFALL DRIVEN PROCESSES: A CASE STUDY OF HURRICANE FLORENCE (2018)”. Leijnse et al. (2023). https://doi.org/10.1142/9789811275135_0235
- “FORECASTING HURRICANE IMPACTS ON COASTS USING COASTAL STORM MODELING SYSTEM (COSMOS)”. Van Dongeren et al. (2023). https://doi.org/10.1142/9789811275135_0242
- “An Integrated Assessment of Climate Change Impacts and Implications on Bonaire”. Van Oosterhout (2023). <https://link.springer.com/article/10.1007/s41885-023-00127-z>
- “Towards FAIR hydrological modeling with HydroMT”. Boisgontier et al. (2023). EGU General Assembly 2023, Vienna, Austria, 24–28 Apr 2023, EGU23-13770, <https://doi.org/10.5194/egusphere-egu23-13770>.
- “Deriving a parametrization for estimating nearshore infragravity wave energy for scaling up wave-resolving flood hazard modelling”. Leijnse et al. (2023). 17th International Workshop on Wave Hindcasting and Forecasting.

- “Wave effects in a rapid compound flood model”. van Ormondt et al. (2023). 17th International Workshop on Wave Hindcasting and Forecasting.
- “Accounting for Uncertainties in Forecasting Tropical Cyclone-Induced Compound Flooding. Nederhoff et al. (2023). EGU sphere [preprint], <https://doi.org/10.5194/egusphere-2023-2341>
- More information regarding recent advancements with subgrid features can be seen in this online poster: <https://agu2020fallmeeting-agu.ipostersessions.com/Default.aspx?s=9C-05-18-CF-F1-2B-17-F0-7A-21-93-E6-13-AE-F3-24>

Leijnse et al. (2020)

- More information regarding recent comparisons using SFINCS to model waves can be seen in this online poster: https://agu2020fallmeeting-agu.ipostersessions.com/?s=30-38-5A-0C-8E-22-C8-84-CC-46-3C-95-18-80-C2-76&token=5r05NKRASrFrnkybTgXa4Y_XvgfV233Dazers0dZzo

Lasserre et al. (2020)

1.2 Developments

SFINCS has continually being developed since 2017, and many great features have been added over the years. Hereby some examples regarding subgrid features and GPU computing.

1.2.1 Development status

See here a schematic overview of the SFINCS development status at Q4 2023, at the time of the v2.0.3 Cauberg release. Indicated are new functionality for SFINCS itself (core), and model setup/post-processing using HydroMT-SFINCS and Delft Dashboard (Python).

1.2.2 Known issues

Known issues of the current SFINCS main version and last release are (improvements are work in progress):

- The BMI implementation in SFINCS is up to date with openearth/bmi-python, which is however not up to date with the latests CSDMS standard BMI implementation
- The combination of netspwfile with large difference in reference time between the spiderweb and the SFINCS simulation itself, might not run correctly in the Docker version. Use the ascii spwfile input or the Windows build executable which work correctly.

1.2.3 Releases Changelog

Official open source version Q4 2023: v2.0.3 Cauberg release

The last official 2023 release of SFINCS for Q4, the v2.0.3 Cauberg release, ‘Climbing hills of challenges in compound flood modelling’, is now available!

This contains open access to the source code from Github: https://github.com/Deltares/SFINCS/releases/tag/v2.0.3_Cauberg_release.

As pre-compiled Windows executable:

<https://download.deltares.nl/en/sfincs/>

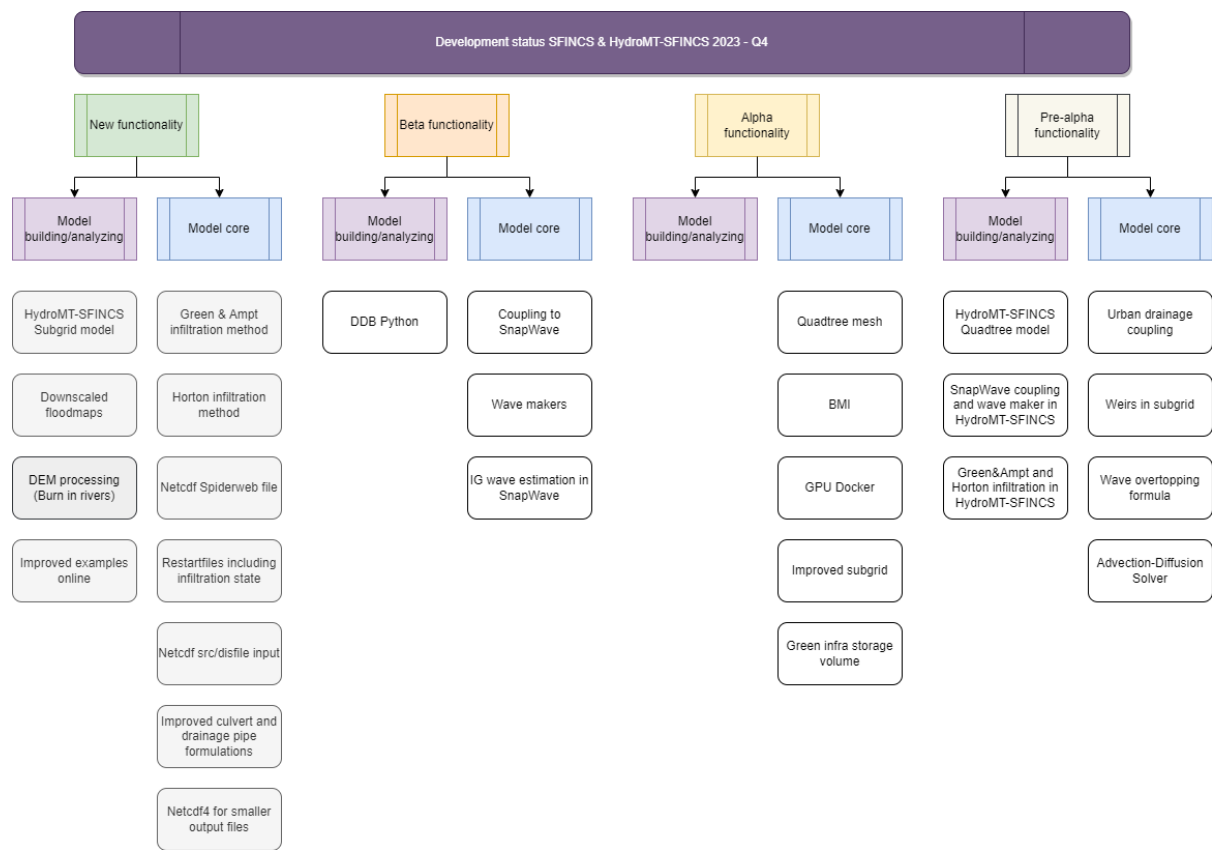


Fig. 1.10: Overview of SFINCS development status Q4 2023

As Docker container:

```
docker pull deltares/sfincs-cpu:sfincs-v2.0.3-Cauberg
```

Changes:

The code consists of all functionality of the v2.0.2 release, with the following changes/additions:

Added functionality:

- Netcdf4 compliant output, for reduced file sizes
- Green & Ampt infiltration method
- Horton infiltration method
- Restartfiles including infiltration state, for the case of Curve Number with Recovery, Green&Ampt and Horton
- Netcdf Spiderweb input option
- Netcdf src+dis input option

Other changes:

- Improved culvert and drainage pipe formulations
- Updated documentation
- Added tests in skillbed report
- Compliance with new Python setup tools HydroMT-SFINCS release v1.0.2

Official open source version Q2 2023: v2.0.2 Blockhaus release

As the first out of 2 official 2023 releases, the v2.0.2 Blockhaus release, ‘Smoothly cycling over challenges in compound flood modelling’, is now available as Windows executable: <https://download.deltares.nl/en/sfincs>

And Docker container: `docker pull deltares/sfincs-cpu:sfincs-v2.0.2-Blockhaus`

This contains open access to the source code from Github: <https://github.com/Deltares/SFINCS/releases/tag/v2.0.2>.

The code consists of all functionality of the v2.0.0 release, with the following changes/additions:

- Potentially breaking change: flipped x&y coordinates in Netcdf map output to be Sgrid compliant. Note; might impact Matlab/Python post-processing scripts (fixed in new HydroMT-SFINCS release v1.1.0)
- Improved 2D component of advection scheme
- Option to not use rainfall in spiderweb, keyword: `usespwprecip = 0`
- The x&y-coordinates of input weirfiles as snapped on grid internally in SFINCS are now written to the `sfincs_his.nc` file; `structure_x`, `structure_y` & `structure_height`
- Option to include viscosity, enabling running on `theta=1.0`, with `viscosity = 1`. The values ‘`nuvisc`’ will be automatically determined based on your grid resolution, and written to the log screen. Value can still be overruled by specifying ‘`nuvisc = value`’ directly, or increased with e.g. a factor 2 using ‘`nuviscdim = 2`’.
- Save maximum velocity proxy (in m/s) on ‘`dtmaxout`’ interval: `storevelmax = 1`
- Save maximum flux ($h * U$ in m^2/s) on ‘`dtmaxout`’ interval: `storefluxmax = 1`
- Save maximum discharge through drainage structure from ‘`drnfile`’ input on ‘`dthisout`’ interval: `storeqdrain = 1`
- Bugfix in weir formulation
- Updated documentation
- Added tests in skillbed report

- Compliance with new Python setup tools HydroMT-SFINCS release v1.0.1

Official open source version: v2.0.0 Alpe d'Huez release

On the 16th of November 2022, we have made SFINCS open source available as the SFINCS v2.0.0 Alpe d'Huez release, 'Moving Dutch Mountains in compound flood modelling'. This contains open access to the source code and executables from Github: <https://github.com/Deltares/SFINCS>. The code consists of all functionality of v1, with the large addition of the subgrid mode and first GPU functionality using openacc. For more details, see below.

Pre-release version(s): v1 revision XXX

Before making SFINCS open source, version history was controlled using subversion numbering. Therefore papers using pre-release versions of SFINCS for instance refer to 'trunk revision 141', as in Leijnse et al. 2021. These version 1 revisions contained all standard SFINCS functionality for the regular mode.

1.2.4 Recent advancements in accuracy: subgrid mode

What are subgrid features?

Subgrid features are a method in which flux computations are performed on a coarser grid than the update of the water levels which is done on a much finer resolution. In this way computations can be sped up, while still using high resolution information of topography and bathymetry.

Why subgrid features?

Often model runtimes are too large to go to very fine resolution modelling because refining a grid size with a factor 2, leads to a 2^3 longer model runtime due to the time step limitation in the CFL-criteria. This can be overcome by using a subgrid approach for the continuity update. This has the benefit that larger grid domains can be used while keeping accurate results.

How does it work?

The subgrid method implemented so that subgrid tables are derived in pre-processing that contain relations between the water level and volume for every grid cell. These tables are derived using high resolution topography and bathymetry data. In the SFINCS model itself, these subgrid tables are used to determine an accurate estimation of the water level after calculating fluxes on a coarser grid resolution. Additionally, for calculating the fluxes between cells, a representative water depth is determined. This makes it possible to compute on a coarser grid resolution (improvement of efficiency) while still detailed information about the local elevation is incorporated when determining corresponding water levels leading to accurate results.

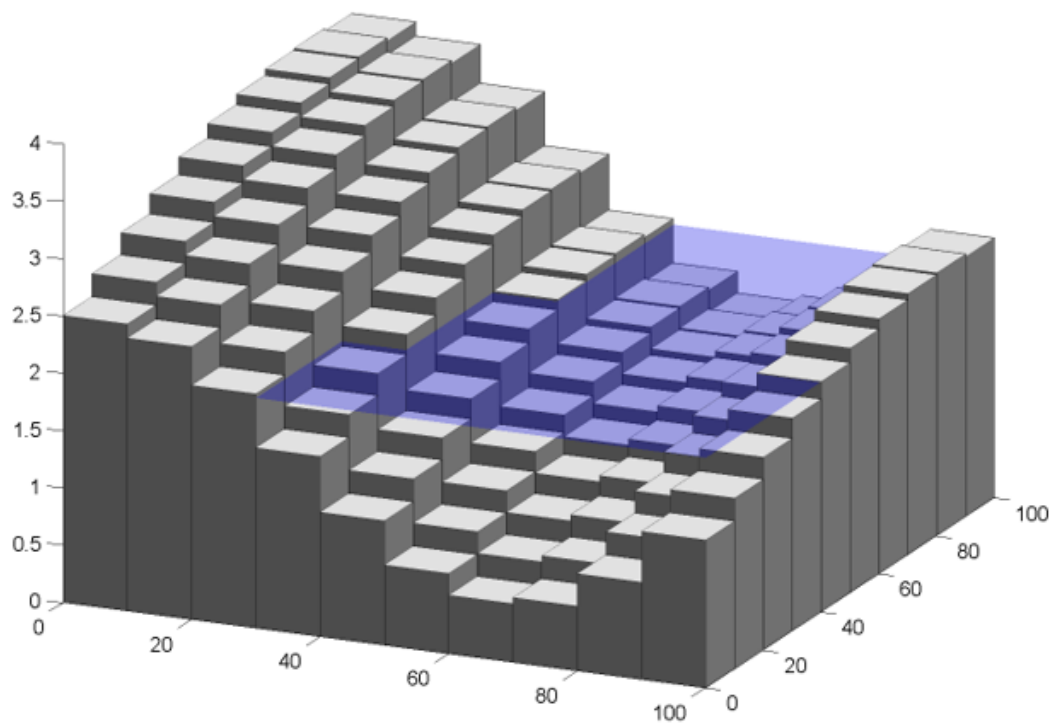


Fig. 1.11: Example subgrid features within one grid cell

Increase in computational efficiency?

Due to this time step limitation, if one can calculate fluxes on a 200 m grid instead of a 100m grid, the computational speedup is a factor 8. Our case study in Houston shows that even larger increases in speed are possible! See: <https://agu2020fallmeeting-agu.ipostersessions.com/Default.aspx?s=9C-05-18-CF-F1-2B-17-F0-7A-21-93-E6-13-AE-F3-24>

1.2.5 Recent advancements in speed: GPU enabled

The SFINCS source code has now been GPU enabled to make optimal use of fast Graphics Processing Unit computers. For more information get in touch with us!

1.3 Setting up models

1.3.1 Introduction

SFINCS models can be set up using simple ascii text and/or binary input files, which can be generated on whatever platform suiting you as a user best. While SFINCS itself is coded in Fortran, it does not matter whether you create the input using a text editor, Matlab or Python. To make the setting up of basic models easier, making a SFINCS model is supported by 3 open source available options:

- Graphical User Interface (GUI) to make SFINCS models interactively: **‘Delft Dashboard’**
- Matlab scripts toolbox in the **‘Open Earth Toolbox’**
- Command line/Python script framework called **‘HydroMT’**, with its dedicated plugin **‘hydromt_sfincs’**

If you need a more tailor-made solution for setting up your SFINCS models get in touch with us!

1.3.2 Delft Dashboard

Delft Dashboard (Van Ormondt et al. 2020 <https://doi.org/10.2166/hydro.2020.092>) is a quick set-up tool GUI for hydrodynamic models that includes setting up SFINCS models. The tool can be run on Matlab or as standalone executable and has all the basic functionality to setup your basic model using globally available DEMs in an interactive way.

For more information see: <https://publicwiki.deltares.nl/display/DDB>

1.3.3 Open Earth Tools

In the Open Earth Tools a toolbox of Matlab scripts is included to have more flexibility in setting up your SFINCS models, that is also used by Delft Dashboard. Throughout this User Manual examples of how to use these scripts are given in the code blocks **‘Matlab example using OET’**. For a general overview of possible input files and how to create them using Matlab scripts see: <https://svn.oss.deltares.nl/repos/openearthtools/trunk/matlab/applications/sfincs/> For getting started with Open Earth Tools see: <https://publicwiki.deltares.nl/display/OET/OpenEarth>

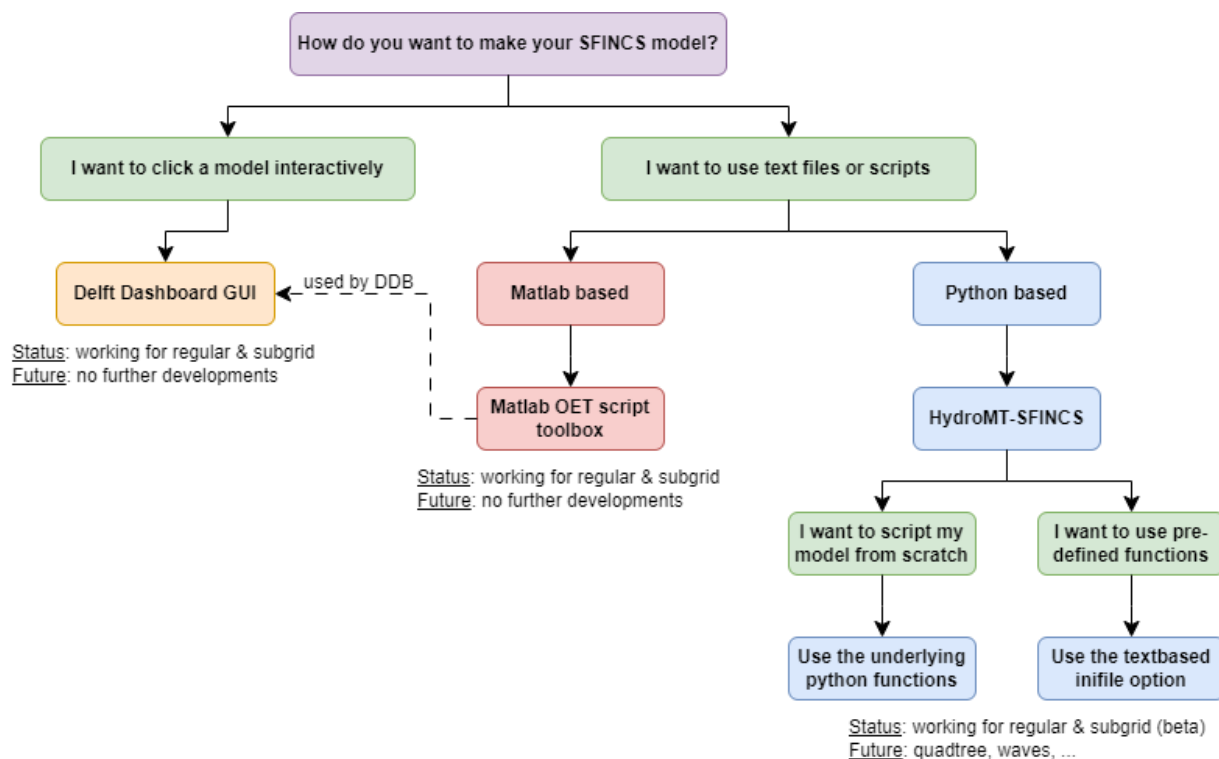


Fig. 1.12: Overview of input file of SFINCS with indication whether they are required or not

1.3.4 HydroMT-SFINCS

HydroMT (Eilander et al. 2022 <https://doi.org/10.5194/egusphere-2022-149>) is a more recent addition to the tools available for setting up SFINCS models, and is a Python based command-line alternative. Besides globally available DEMs it can also retrieve spatially varying infiltration and manning roughness data based on landuse maps. Also, it is possible to burn in rivers or setup a offline coupled model together with the hydrological Wflow model that will provide boundary conditions as river discharge.

- For more information regarding the SFINCS plugin of HydroMT see: https://deltares.github.io/hydromt_sfincs/
- For more information regarding HydroMT in general see: <https://deltares.github.io/hydromt/>
- For more user flexibility, it is also possible now to access individual setup components to build your own model or forcing from scratch, see: https://deltares.github.io/hydromt_sfincs/latest/user_guide/sfincs.html
- For an example of building a model from scratch in Python see: https://deltares.github.io/hydromt_sfincs/latest/_examples/build_from_py.html

1.4 Executable

We provide pre-compiled versions of SFINCS for you to use directly:

- Windows: <https://download.deltares.nl/en/sfincs>
- Platform independent through Docker (Windows/linux/singularity/HPC): <https://hub.docker.com/r/deltares/sfincs-cpu>

1.5 Compiling yourself

If you want to compile SFINCS yourself for windows to test certain improvements, you need Visual Studio and an Intel Fortran compiler. Find here at tested and free available combination:

- Visual Studio Community 2022 - freely available from: <https://visualstudio.microsoft.com/vs/community/>
- Intel Fortran Compiler Classic and Intel Fortran Compiler for Windows* 2022.1.0 - freely available from: <https://www.intel.com/content/www/us/en/developer/articles/tool/oneapi-standalone-components.html>

After installation and configuring (see respective websites for help), you can compile your own SFINCS model locally and add features. Make a checkout of the SFINCS github page, and open the VS solution file to do this: <https://github.com/Deltares/SFINCS/blob/main/source/sfincs.sln>

To collaborate together and under the GNU GPL-v3.0 license SFINCS comes with, share any improvements with us as pull request on Github: <https://github.com/Deltares/SFINCS/pulls>

1.6 Running SFINCS

SFINCS can be run on multiple different platforms, both local, HPC and cloud based. The simplest way is to run SFINCS on Windows using a batch-file.

1.6.1 On windows (standard)

The standard method to run SFINCS locally is on a windows machine using a batch-file. This batch file you copy to the folder where your input files to be used by SFINCS are located. The batch file simply calls the executable (add the right path to the folder where sfincs.exe is located) and the general output text file is written to a new text file called 'sfincs_log.txt', see below for an example.

Using batch-file

run.bat

make a text file called 'run.bat' and add here:

```
call "c:\..\folder_where_exe_is_located\sfincs.exe">sfincs_log.txt
```

1.6.2 On linux

Dedicated linux compiled version

Generally for Linux (HPC) systems, running using Docker or Singularity is the most generic and successful way. In case you need a dedicated Linux build, get in touch and we can create a version specifically for you. We have experience doing this for our own Deltares cluster.

1.6.3 Using Docker

For always using the last build version of SFINCS on Windows, Mac, Linux or a cloud based cluster a convenient solution is running a Docker container version of SFINCS. This can be done on a local desktop or in a cloud based cluster supporting docker (or using singularity, see below).

Note that this Docker version of SFINCS is available under the same GNU GPL-v3 License as the windows executable.

Local desktop version

After downloading Docker desktop for your operating system (<https://www.docker.com/products/docker-desktop>), you can run a model using:

Example

```
docker pull deltares/sfincs-cpu

docker run -vC:/Users/../../SFINCS:/data deltares/sfincs-cpu

(here 'C:/Users/../../SFINCS' is the folder where the SFINCS input files to be used are
located)
```

NOTE - you have to supply the full path, not a relative path!

NOTE - For Linux/Mac you do the same, but write the path as /C/Users/../../SFINCS/

Instead of using the latest automatically compiled version, you can also pull a verified tagged release from: <https://hub.docker.com/r/deltares/sfincs-cpu/tags> This can be for instance the open source release version 'docker pull deltares/sfincs-cpu:sfincs-v2.0.3-Cauberg'.

Cloud based cluster

The same principle is also possible on a cloud based cluster that supports running docker containers

1.6.4 Using Singularity


On cloud based clusters like Surfsara/Azure/Amazon that **supports singularity**, it is possible to run the Docker container version of SFINCS directly. Depending on the application it could be wise to pull the docker container once and save as new image, after which this image can be run multiple times. This prevents unnecessarily loading the Docker container every time a simulation is performed.

Note that this Docker version of SFINCS is available under the same GNU GPL-v3 License as the windows executable.

Example

Pulling and running the docker container immediately:

```
singularity run -B$(pwd):/data --nv docker://deltares/sfincs-cpu
```

First pulling the docker container and creating a singularity image, then running this  image:

```
singularity pull docker://deltares/sfincs-cpu sfincs-cpu.img
```

```
singularity run -B$(pwd):/data sfincs-cpu.img
```

Also here, instead of using the latest automatically compiled version, you can also pull a verified tagged release from: <https://hub.docker.com/r/deltares/sfincs-cpu/tags> This can be for instance the open source release version 'sfincs-v2.0.3-Cauberg'.

1.7 Courses learning SFINCS

Besides the elaborate information available in this manual, we do offer courses to learn from the experts how to set up a SFINCS model, and the theory and philosophy behind the model:

- SFINCS trainings during the DSD are planned to be yearly, for an up to date agenda see: <https://softwaredays.deltares.nl/welcome>
- For US/Canada users, online SFINCS training through Deltares USA, Apr 24&26 2024, see: <https://www.deltares-usa.us/book-online>

If these dates don't suit you or your organisation, or you want a more advanced training; get in touch and we can set up a tailor-made course for you.

1.8 Questions and support

As Deltares is a NGO project-based organisation, and while we do try to answer all your questions, we simply cannot do this to the ultimate end-degree-level as the model is provided to you free of charge.

If you do have more structurally returning questions about how to set up SFINCS models for your application, considering getting a Software Service Package. For more information, send an email to: software@deltares.nl

Additionally, if you want the experts to set up a first working framework of SFINCS models for you, get in touch with product manager tim.leijnse@deltares.nl to discuss options for collaborations to set this up.

1.9 Contributing

1.9.1 Documentation

The code of this documentation is available from <https://github.com/Deltares/SFINCS/docs>. Get in touch if you have suggestions how to improve this manual, or put in a pull request with improvements yourself: <https://github.com/Deltares/SFINCS/pulls>

1.9.2 Code

The SFINCS code is open source as of 16-11-2022, see: <https://github.com/Deltares/SFINCS/source>

Get in touch if you would like to join us in developing the SFINCS code, or put in a pull request on Github with improvements yourself: <https://github.com/Deltares/SFINCS/pulls>

1.10 User manual - general

1.10.1 Overview

The input for SFINCS is supplied using various text and binary files, which are linked through the main input file: `sfincs.inp`. Within this section of the input description all major input settings and files are discussed. The figure below gives an overview of all different types of input files and whether they are required or not. Below an example is given of this file, which uses a keyword/value layout. For more information regarding specific parameters see the pages ‘Input parameters’ or ‘Output parameters’.

NOTE - In the manual below, blocks named ‘Matlab example using OET’ are included, referring to easy setup scripts included in the SFINCS’ Open Earth Tools Matlab set of scripts: <https://svn.oss.deltares.nl/repos/openearthtools/trunk/matlab/applications/sfincs>

1.10.2 Example of `sfincs.inp`

```
x0          = 0
y0          = 0
mmax        = 100
rmax        = 100
dx          = 100
dy          = 100
rotation    = 0

tref        = 20221116 000000
tstart      = 20221116 180000
tstop       = 20221116 235959

depfile     = sfincs.dep
mskfile     = sfincs.msk
indexfile   = sfincs.ind

bndfile     = sfincs.bnd
bzsfile     = sfincs.bzs
```

(continues on next page)

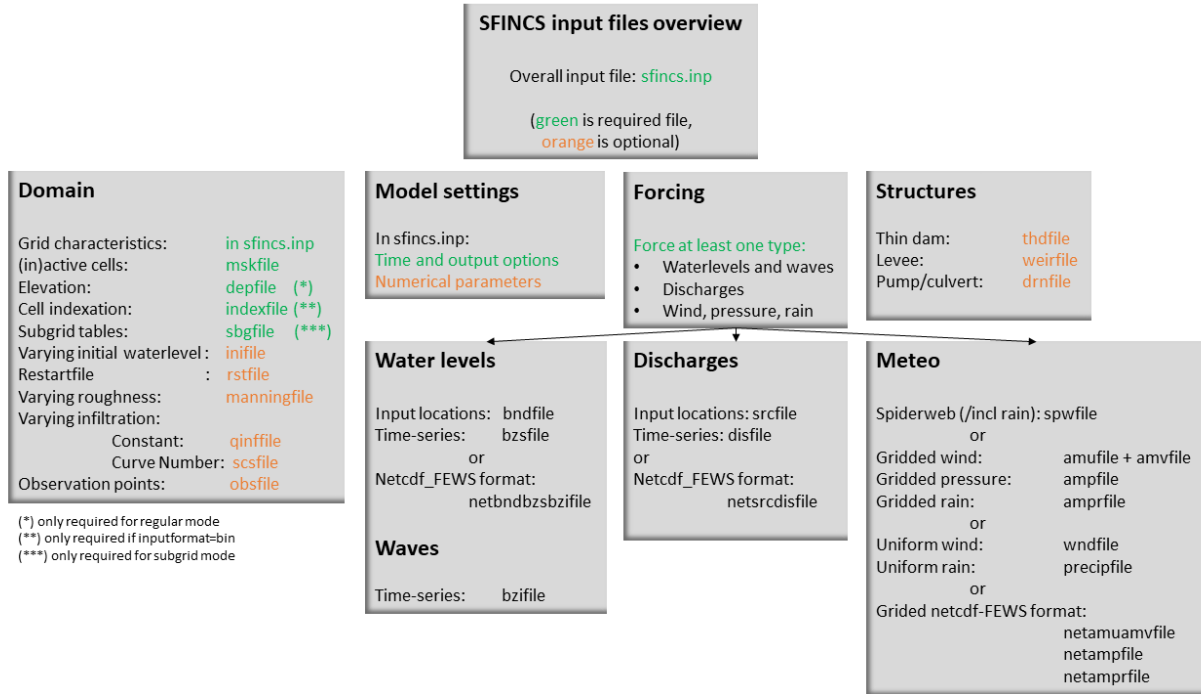


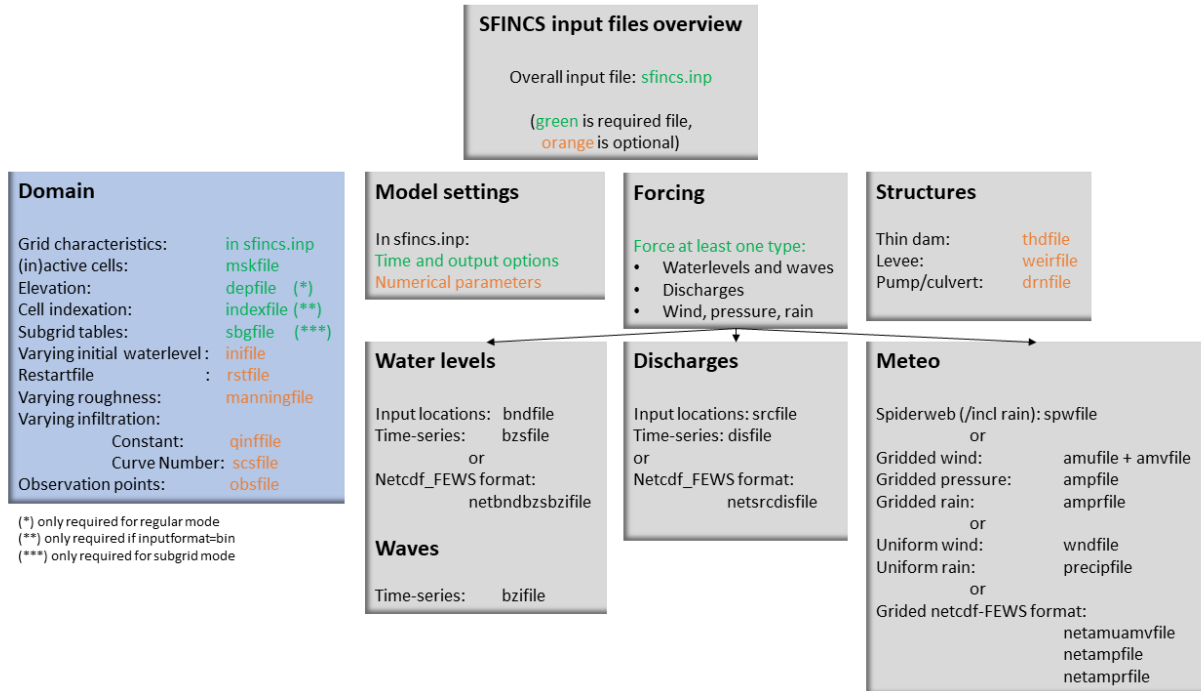
Fig. 1.13: Overview of input file of SFINCS with indication whther they are required or not

(continued from previous page)

spwfile	=	sfincs.spw
srcfile	=	sfincs.src
disfile	=	sfincs.dis
advection	=	0
alpha	=	0.75
huthresh	=	0.05
manning	=	0.04
theta	=	1.0
qinf	=	0.0
dtout	=	3600
dtmaxout	=	86400
dthisout	=	600
inputformat	=	bin
outputformat	=	net
obsfile	=	sfincs.obs

1.10.3 Domain

To set up a SFINCS model a number of parameters and files need to be specified to define the domain of the location where a model is being set up for, see the figure below. This consists of parameters of the grid characteristics in the main `sfincs.inp`-file and multiple separate input files. Some of these are required (elevation, active cells, indexfile in case of binary files) and others are optional (roughness, infiltration, subgrid tables, observation points).



Grid characteristics

SFINCS uses a staggered equidistant recti-linear grid, grid sizes for x- a y-direction can be different. SFINCS can only be used in cartesian coordinates (e.g. UTM zone). The grid is initialised by stating an origin location of the cell edges (x0, y0), a number of grid cells in x-&y-direction (mmax, nmax) and the grid sizes in x-&y-direction (dx,dy). If desired the grid can also be rotated using 'rotation', in degrees from the x-axis (east) in anti-clockwise direction.

e.g. in `sfincs.inp`:

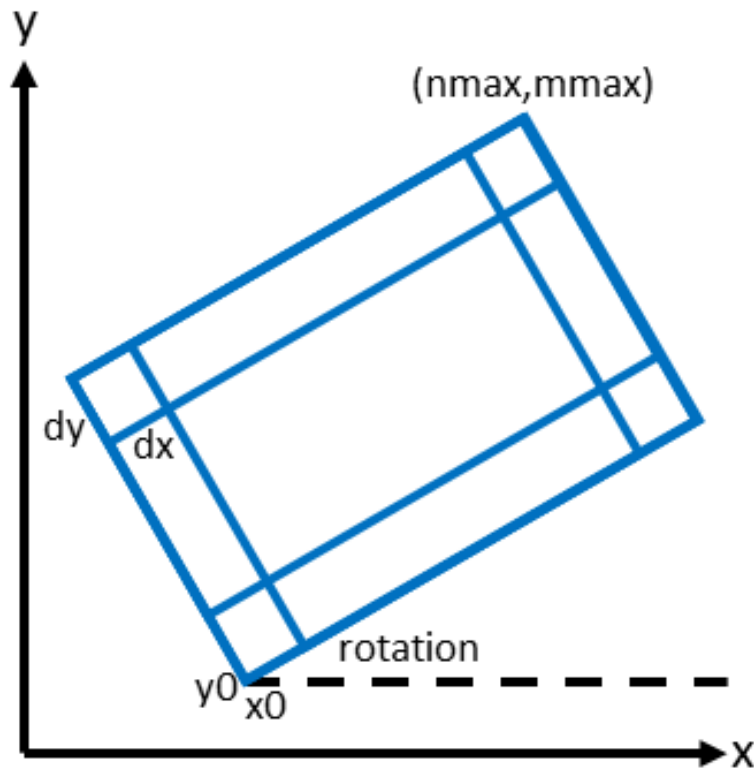
```
x0          = 0
y0          = 0
mmax        = 250
nmax        = 150
dx          = 100
dy          = 100
rotation    = 45
```

Matlab example using OET

```
inp = sfincs_initialize_input;

inp.x0          = 1000
```

(continues on next page)



(continued from previous page)

```
inp.y0          = 2000
sfincs_write_input('sfincs.inp',inp)
```

Depth file

To describe the local topography and bathymetry, elevation data has been supplied to the model. This can be of any multiple of sources, but it is advised that the transition zone between different datasets and between above/below water level are checked with care. The elevation is described in the cell centres of the grid.

The elevation is defined in `sfincs.dep` based on the specified grid, positive is upwards with respect to a certain reference level (topography has positive values, bathymetry has negative values). The reference level is not known to SFINCS (and not relevant for the computation), so a user itself must be consistent in the use of specifying elevations in different files (elevation, initial water level, boundary conditions) always to the same vertical reference level (whether it is local MSL, NAP, EGM96 etc. etc.).

NOTE - The depfile is not used when running SFINCS in the subgrid mode (see below)

depfile = sfincs.dep

```
<z0 x0,y0> <z0 x1,y0>
<z0 x0,y1> <z0 x1,y1>
```

(continues on next page)

(continued from previous page)

```
e.g.
2.0    2.2
1.8    2.4
```

Matlab example using OET

```
z = 5 * ones(nmax,mmax);
msk = ones(nmax,mmax);

% inputformat = bin:
sfincs_write_binary_inputs(z,msk,inp.indexfile,inp.depfile,inp.mskfile)

% inputformat = asc:
sfincs_write_ascii_inputs(z,msk,inp.depfile,inp.mskfile)
```

Mask file

To distinguish active from inactive areas and cells where boundary conditions need to be forced, a mask file needs to be supplied. This mask indicates for every cell whether it is an inactive cell (msk=0), active cell (msk=1), boundary cell (msk=2) or outflow boundary cell msk=3). This allows great flexibility in optimising the model domain and thereby reducing the computational runtime as much as possible.

If boundary water levels are supplied, these are only forced to the cells with a value of 2. Cells with a value of 0 are inactive and no fluxes from/to these cells are calculated. The file can be made with the OET script 'sfincs_make_mask.m', whereby default a value of -2 m to MSL is used to distinguish the cells.

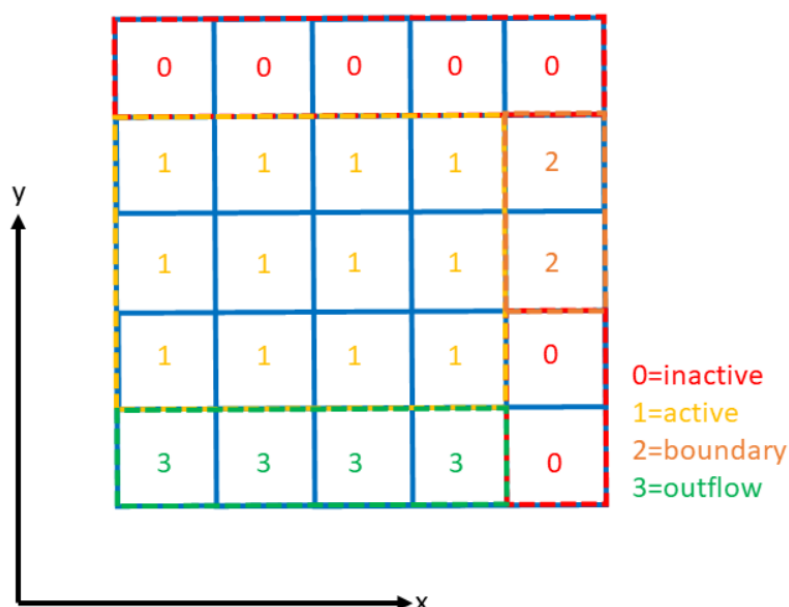


Fig. 1.14: Example of the different mask values on a grid.

mskfile = sfincs.msk

```
<msk (x0,y0)> <msk (x1,y0)>
```

```
<msk (x0,y1)> <msk (x1,y1)>
```

e.g.

```
0      1
2      3
```

Matlab example using OET

```
z = 5 * ones(nmax,mmax);
msk = ones(nmax,mmax);

% inputformat = bin:
sfincs_write_binary_inputs(z,msk,inp.indexfile,inp.depfile,inp.mskfile)

% inputformat = asc:
sfincs_write_ascii_inputs(z,msk,inp.depfile,inp.mskfile)
```

Index file

Additionally a index file is needed when supplying binary input files (inputformat = bin). This file is automatically generated when using the Matlab script sfincs_write_binary_inputs as in the example above.

indexfile = sfincs.ind

```
<cell number 1> <cell number 2> <cell number 3>
```

Subgrid tables

Currently the SFINCS model functionality has been extended so that SFINCS can also calculate flooding with the use of subgrid tables. Hereby high-resolution elevation data is used to derive relations between the water level and the volume in a cell to do the continuity update, and a representative water depth used to calculate momentum fluxes. The derivation of these subgrid tables is a pre-processing step outside of the model, that only needs to be done once! The advantage of the subgrid version of SFINCS is that generally one can compute on coarsed grid sizes, while still having accurate results utilizing the high-resolution elevation data to its full potential.

Making subgrid tables is an advanced option that is only shown here as example using Matlab OET using the function 'sfincs_build_model.m'. Get in touch with us to discuss the best solution to make subgrid features for your application (e.g. in Python).

The easiest way to make a SFINCS model using the subgrid functionality, is by using a recent version of the Delft Dashboard GUI.

After supplying a subgrid file so SFINCS (sbgfile = sfincs.sbg), SFINCS will automatically run in subgrid mode!

Matlab example using OET

For more information see: https://svn.oss.deltares.nl/repos/openearthtools/trunk/matlab/applications/sfincs/sfincs_modelsetup/sfincs_build_model.m

```
inp = sfincs_initialize_input;

inp.sbgfile = sfincs.sbg;
```

(continues on next page)

(continued from previous page)

```

> change wanted grid settings dx/dy/mmax/nmax etc.
inp.dx = 200;

> define output folder; folder = 'c:\test\'

> define bathymetry source from Delft Dashboard data source selection, e.g.;
bathy(1).name = 'ngdc_crm';
bathy(1).zmin = 0;
bathy(1).zmax = 10000;
bathy(1).vertical_offset = 0;

bathy(2).name = 'ngdc_crm';
bathy(2).zmin = -10000;
bathy(2).zmax = 0;
bathy(2).vertical_offset = 0;

```

The first defined bathymetric source is always used first (given elevation constraints of 'zmin' and 'zmax'), after which the other sources are used in given hierarchy. For types of possible data sources or adding your own one, see the Delft Dashboard manual: <https://publicwiki.deltares.nl/display/DDB/Delft+Dashboard>. This elevation data is used to make the subgrid tables including relations between water level and volume within a cell (among others) using detailed elevation data on subgrid resolution.

By default the subgrid cells are set to be 10 times smaller than the input dx/dy.

```

> define wanted project coordinate reference system (UTM zone), e.g.;
cs.name = 'WGS 84 / UTM zone 17N';
cs.type = 'projected';

sfincs_build_model(inp, folder, bathy, cs)

```

Friction

Different roughness values can great impact modelled flooding and thereby SFINCS allows the specification of a uniform value, differentiating land and sea with 2 different values or specifying a specific value per grid cell.

Friction is specified with a Manning roughness coefficient 'n' [$\text{s/m}^{1/3}$] and can be done spatially uniform, land/sea value based or spatially varying.

The following options are **ONLY** relevant for the **regular** version of SFINCS, in the subgrid version of SFINCS roughness is already included in the subgrid sbgfile and supplied additional keywords and files will **NOT** be used!

Spatially uniform:

Specify the keyword:

```
manning = 0.04 (default)
```

Land/sea value:

For spatially varying a reference level in meters 'rgh_lev_land' is used to distinguish land 'manning_land' (elevation > rgh_lev_land) and sea 'manning_sea' (elevation < rgh_lev_land) with different friction values.

```
rgh_lev_land = 0 (default)
```

```
manning_land = 0.04
```

```
manning_sea = 0.02
```

Spatially varying:

For spatially varying friction values per cell use the manningfile option, with the same grid based input as the depfile using a binary file.

manningfile = sfincs.man

```
<manning x0,y0> <manning x1,y0>
```

```
<manning x0,y1> <manning x1,y1>
```

e.g.

```
0.02    0.02
```

```
0.06    0.04
```

Matlab example using OET

```
inp.manningfile = 'sfincs.man';
```

```
manning = 0.02 * ones(nmax,mmax);
```

```
msk = ones(nmax,mmax);
```

```
sfincs_write_binary_inputs(manning,msk,inp.indexfile,inp.manningfile,inp.mskfile)
```

Infiltration

Infiltration processes play a critical role in flood mitigation as they determine the proportion of rainfall that is absorbed into the soil versus that which becomes surface runoff. The capacity of the ground to infiltrate rainwater is influenced by various factors such as soil type, vegetation cover, and land use, thereby directly influencing flood risk. If the infiltration capacity is exceeded during high-intensity rainfall events, the excess water may lead to rapid surface runoff and potential flooding, thus making it crucial to consider infiltration processes when modeling and predicting flood scenarios.

SFINCS allows the specification of the following options for accounting for infiltration: 1. Uniform constant-in-time value 2. Spatially varying constant -in-time value 3. The Curve Number method: empirical rainfall-runoff model 4. The Green-Ampt method: empirical rainfall-runoff model 5. The Horton infiltration method

Infiltration is specified with either constant in time values in mm/hr (both uniform and spatially varying), or using more detailed parameters for the Curve Number method, The Green-Ampt method or Horton method.

NOTE - Infiltration in SFINCS is only turned on when any rainfall is forced'

NOTE - Infiltration methods in SFINCS are not designed to be stacked

Spatially uniform constant in time:

Specify the keyword:

```
qinf = 1.0
```

NOTE - To have some control that no infiltration is added an areas like the sea for this spatially uniform constant in time infiltration method, only infiltration is added to cells above a certain elevation above the bed level reference height

NOTE - By default this is set to 0, qinf_zmin = 0 (default), so below e.g. MSL, no infiltration is added

Spatially varying constant in time:

For spatially varying infiltration values per cell use the qinfile option, with the same grid based input as the depfile using a binary file.

qinfile = sfincs.qinf

```
<infiltrationrate x0,y0> <infiltrationrate x1,y0>
```

```
<infiltrationrate x0,y1> <infiltrationrate x1,y1>
```

e.g.

```
1.0      5.0
```

```
0.0      6.0
```

Matlab example using OET

```
inp.qinfile = 'sfincs.qinf';
```

```
infiltration = 2.2 * ones(nmax,mmax);
```

```
msk = ones(nmax,mmax);
```

```
sfincs_write_binary_inputs(infiltration,msk,inp.indexfile,inp.qinfile,inp.mskfile)
```

The Curve Number method:

The Curve Number (CN) method is a popular empirical procedure developed by the USDA Soil Conservation Service for estimating direct runoff volume and peak discharge rate from rainfall events. The method takes into account characteristics of the watershed, such as land use, soil type, and hydrologic conditions, expressed as a single 'Curve Number'. This CN is used to calculate a runoff coefficient, which is then used in determining the volume of runoff from a rainfall event. Within SFINCS, the options of the Curve Number method have been included: without recovery and without recovery during dry periods. Both are described in this manual. In its classic form, the Curve Number model uses the following equation to relate total event runoff Q to total event precipitation P as follows:

$$S = (1000./CN - 10)$$

$$Q = (P^2/(P+S_{max}))$$

where S_{max} = the soil's maximum moisture storage capacity. S_{max} typically derived from a tabulated 'curve number' CN that varies with soil type and antecedent condition. It should be emphasized that these equations use units of inches while in SFINCS we apply the metric system.

Without recovery

For spatially varying infiltration values per cell using the Curve Number method without recovery use the `scsfile` option, with the same grid based input as the `depfile` using a binary file. Note here that in pre-processing the wanted CN values should be converted to S values following: * `scsfile`: maximum soil moisture storage capacity in inches

```
<curve_number_value x0,y0> <curve_number_value x1,y0>
```

```
<curve_number_value x0,y1> <curve_number_value x1,y1>
```

e.g.

0	10
5	20

The user can also specify the `sfacinf` which control the initial abstraction or the amount of water before runoff, such as infiltration, or rainfall interception by vegetation; historically, it has generally been assumed that `sfacinf` = 0.2 (default, however, for urbanized watersheds lower values can be expected (e.g. 0.05).

This option doesn't support restart functionality.

With recovery

Within SFINCS, the Curve number method with recovery can be used as follows. The user needs to provide the following variables. For all variables, one needs to specify these values per cell with the same grid based input as the `depfile` using a binary file:

- `smaxfile`: maximum soil moisture storage capacity in m
- `sefffile`: soil moisture storage capacity at the start in m
- `ksfile`: saturated hydraulic conductivity in mm/hr

Using the saturated hydraulic conductivity, a recovery variables recovery constant (kr) and minimum recovery time before a new rainfall event occurs (hours) are computed similar to SWMM. The Curve Number has been implemented in `hydromt-SFINCS`. See https://deltares.github.io/hydromt_sfincs/latest/_generated/hydromt_sfincs.SfincsModel.setup_cn_infiltration_with_kr.html for more information.

This option does support restart functionality.

The Green-Ampt method:

The Green-Ampt method is a hydrological model extensively used to predict soil infiltration rates under ponded conditions, i.e., when water is freely available on the surface. This method considers important parameters such as initial soil moisture content, hydraulic conductivity, and soil capillary suction head.

The basic form of the Green-Ampt equation is expressed as follows:

$$f(t) = K(1 + \Delta\theta (\sigma + h_0) / F(t))$$

In which t is time, K is the saturated hydraulic conductivity, $\Delta\theta$ is defined as the soil capacity (the difference between the saturated and initial moisture content) and σ is the soil suction head.

Within SFINCS, the Green-Ampt method can be used as follows. The user needs to provide the following variables. For a range of typically values see Table 1. For all variables, one needs to specify these values per cell with the same grid based input as the depfile using a binary file:

- ksfile: saturated hydraulic conductivity in mm/hr
- sigmafile: suction head at the wetting front in mm
- sifile: soil moisture deficit in [-]

Using the saturated hydraulic conductivity, recovery variables such as the moisture deficit recovery constant (kr), depth of upper soil recovery zone (Lu) and minimum recovery time before a new rainfall event occurs (hours) are computed similar to SWMM. The Green-Ampt method has not been implemented yet in hydromt-SFINCS.

This option does support restart functionality.

The Horton method:

The Horton Method is a conceptual approach used primarily in hydrology to model the rate of infiltration of water into the soil. This method was developed by Robert E. Horton in 1939, and it is foundational in the field of hydrology.

According to the Horton Method, initially, the infiltration capacity is high, but it decreases exponentially over time until it reaches a stable, steady-state value, known as the final infiltration rate. This phenomenon occurs due to the gradual saturation of the soil, and the reduction in infiltration rate continues until it equals the soil's hydraulic conductivity.

The basic form of the Horton equation is expressed as follows:

$$f_t = f_c + (f_0 - f_c) e^{-kt}$$

In which f_t is the infiltration rate at time, f_c is the final, constant infiltration rate, f_0 is the initial infiltration rate, k is a decay constant and t is the time since the start of infiltration.

Within SFINCS, the Horton method can be used as follows. The user needs to provide the following variables. For all variables, one needs to specify these values per cell with the same grid based input as the depfile using a binary file:

- f0file: maximum (Initial) Infiltration Capacity in mm/hr
- fcfile: Minimum (Asymptotic) Infiltration Rate in mm/hr
- kdfile: empirical constant (hr⁻¹) of decay

The recovery of the infiltration rate during dry weather (kr) is calculated as factor of the empirical decay constant. By default, this keyword (horton_kr_kd) is set to 10.0 meaning that the recovery goes 10 times as slow as the decay.

This option also supports restart functionality.

Observation points

Observation points with water depth and water level output can be specified. Per observation point as minimal the x-and y- coordinates are stated, an standard name will then be added per point. Also, names of a station can be provided with quotes “ ” (maximum of 256 characters):

obsfile = sfincs.obs

```
<obs1 x1> <obs1 y1> <obs1 'name1'>

<obs2 x2> <obs2 y2> <obs2 'name2'>

e.g.:
592727.98 2969420.51 'NOAA_8722548_PGABoulevardBridge,PalmBeach'
594279.00 2961312.47 'NOAA_8722588_PortofWestPalmBeach'
595006.75 2944069.38 'NOAA_8722669_LakeWorthICW'
```

Matlab example using OET

```
inp.obsfile = 'sfincs.obs';
obs.x = [592727.98, 594279.00, 595006.75];
obs.y = [2969420.51, 2961312.47, 2944069.38];
obs.names = {'NOAA_8722548_PGABoulevardBridge,PalmBeach', 'NOAA_8722588_
↳PortofWestPalmBeach', 'NOAA_8722669_LakeWorthICW'};

sfincs_write_obsfile(inp.obsfile,obs)
```

Cross-sections for discharge output

Cross-sections to get the discharge flowing through as output can be specified. SFINCS will keep track of the discharge in m3/s flowing through the specified cross-section(s). Per cross-section as minimal a name, the number of points (size data) and the x-and y- coordinates are stated, using the Delft3D ‘tekall’ format. You can specify more than 2 points per cross-section.

The output is available as ‘crosssection_discharge’ in sfincs_his.nc, see the description in “Output description”.

crsfile = sfincs.crs

```
NAME1
2 2 %size data
<x0> <y0> %start of polyline 1
<xend> <yend> %end of polyline 1

NAME2
2 2 %size data
<x0> <y0> %start of polyline 2
<xend> <yend> %end of polyline 1

e.g.

CRS01
3 2
0 100
10 100
```

(continues on next page)

(continued from previous page)

```

20 100
CRS02
2 2
20 200
25 200

```

Matlab example using OET

```

inp.crsfile = 'sfincs.crs';

cross_sections(1).x = [0 10 20];
cross_sections(1).y = [100 100 100];
cross_sections(1).name = {'CRS01'};
cross_sections(2).x = [20 25];
cross_sections(2).y = [200 200];
cross_sections(2).name = {'CRS02'};
cross_sections.length = length(cross_sections);

sfincs_write_cross_sections(inp.crsfile,cross_sections);

```

Initial water level

The water level is by default initiated at 0 meters above mean water level, but can be changed. In the initialisation phase within the model, all cells with an elevation below specified user value are given the specified value of 'zsini', thereby starting without a completely dry bed. For more flexibility, this can also be prescribed spatially varying which can be relevant for coastal, riverine and tsunami cases. This 'inifile' is now only supported using a **binary** file.

NOTE - In pre-release versions of SFINCS this was an ascii type file

Alternatively, you can specify initial conditions using a restart file, see below:

zsini

```
zsini = 1.0
```

inifile = sfincs.ini

```

<zsini_value x0,y0> <zsini_value x1,y0>

<zsini_value x0,y1> <zsini_value x1,y1>

e.g.
1.0      1.2
0.0      0.0

```

Matlab example

```

inp.inifile = 'sfincs.ini';

zini=zeros(inp.nmax, inp.mmax);
zini(:,1:24+1)=0.6;
sfincs_write_binary_inputs(zini,msk,inp.indexfile,inp.inifile,inp.mskfile)

```

Restart file

In order to run SFINCS without spinup of water levels in a subsequent simulation, the waterlevels at the final time step of the former can be saved as binary-file using either the specification of a specific time you want to have the restartfile for (trstout = XXX seconds after 'tref'), or at a certain time interval (dtrstout = XXX seconds). This restart file can then be specified as 'rstfile' in a subsequent SFINCS run, in order to start the simulation with the final water levels of the prior simulation. This currently entails 'type 1', meaning both the water level, fluxes and mean velocities (1: zs, qx, qy, umean and vmean).

```
> in the first SFINCS simulation specify:

dtrstout      = 86400 (restart output every 1 day)

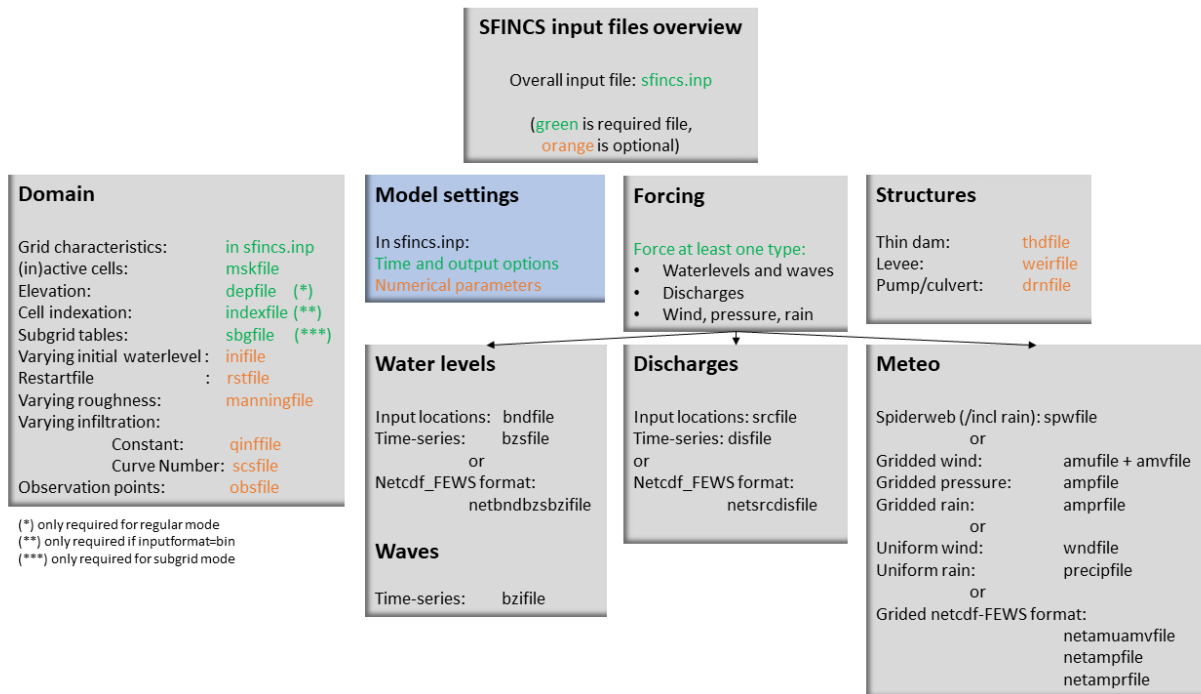
or:

trstout       = 172800 (restart output 2 days after 'tref')

> in the second SFINCS simulation specify:

rstfile       = ./simulation_01/sfincs.rst
```

1.10.4 Model settings



Time management

The required model runtime can be specified by setting a reference date (tref), start date (tstart) and stop date (tstop). The format is 'yyyymmdd HHMMSS', see below:

```
tref          = yyyymmdd HHMMSS
tstart        = yyyymmdd HHMMSS
tstop         = yyyymmdd HHMMSS

e.g.
tref          = 20180000 000000
tstart        = 20180000 000000
tstop         = 20180001 000000
```

Also the output date interval can be controlled. For the map output there is data output every 'dtout' seconds, for optional observation points this is 'dthisout' seconds. It also possible to get the maximum output data over a specific interval (e.g. every day), specify using 'dtmaxout' in seconds. When using a spiderweb-file for the wind input, the values are updated every 'dtwnd' seconds.

```
dtout         = 3600
dtmaxout      = 86400
dthisout      = 600
dtwnd         = 1800
```

Input format

The depth/mask/index-files can be binary or ASCII files. For the former specify 'inputformat = bin' (default), for the latter specify 'inputformat = asc'.

```
inputformat = bin
```

Output format

The main map output can be netcdf, binary or ASCII files. For the former specify 'outputformat = net' (default), for the others specify 'outputformat = bin' or 'outputformat = asc'.

```
outputformat = net
```

Output files

In case of netcdf output the map output will be named 'sfincs_map.nc', in case observation points are provided also a second file will be created with observation point output named 'sfincs_his.nc'.

For more information about the variables saved to the netcdf output files, see the 'Output description' section.

For binary or ascii files the output will be written to separate files, of which the named can be changed:

```
hmaxfile      = hmax.dat
zsfile        = zs.dat
vmaxfile      = vmax.dat
```

Numerical parameters

huthresh

‘huthresh’ is the flow depth limiter in SFINCS, by default set to 0.05 meters, controlling what minimal water depth should be exceeded to call a cell wet, and start calculating fluxes. It is recommended to use values within the range [0.001 <> 0.1].

alpha

‘alpha’ is the additional time step limiter besides the courant criteria. By default this is set to 0.75, in case model simulations become instable for some reason this value can be reduced. It is recommended to use values within the range [0.1 <> 0.75].

theta

‘theta’ sets the implicitness of the numerical scheme of SFINCS. The default value is 1.0 which is recommended for the regular version of SFINCS, however if more smoothing in you model result is needed because it might become unstable for some reason, you could set this to theta=0.9..

advection

‘advection’ sets what version of the advection term to use in the momentum equation, varying between the default of no advection at all (advection = 0), 1D advection terms (advection = 1) and full 2D advection terms (advection = 2). Generally it is only needed to turn on advection in case of modelling waves or super-critical flow.

huthresh	= 0.05
alpha	= 0.75
theta	= 1.0
advection	= 0

viscosity

‘viscosity’ turns on the viscosity term in the momentum equation (viscosity = 1). The recommended value of viscosity ‘nuisc’ to add to your model (only advised to use when you set theta = 1.0), depends on your grid size. For ease, SFINCS internally automatically determines the optimal value for you, which is displayed when running the model: ‘Turning on process: Viscosity, with nuisc= 0.5000000’. In this example corresponding to a grid resolution of 50 meters. In case you would want to increase the viscosity term, you can either specify the exact value you want ‘nuisc = XXX’, or e.g. multiply it by a factor 2: nuiscdim = 2.0 (default = 1.0, dimensionless). By default the value of nuisc is determined like this:

dx = 50 > nuisc = 0.5

dx = 100 > nuisc = 1.0

dx = 500 > nuisc = 5.0

viscosity	= 1
nuiscdim	= 1.0 (default)
nuisc	= XXX (automatically determined, or specify a value yourself that
↪overrules this)	

Drag Coefficients:

The wind drag coefficients are varying with wind speed and implemented as in Delft3D. The default values are based on Vatvani et al. (2012). There is specified for how many points ‘cd_nr’ a velocity ‘cd_wnd’ and a drag coefficient ‘cd_val’ is specified, the following are the default values:


```

cd_nr      = 3

cd_wnd     = 0 28 50

cd_val     = 0.0010 0.0025 0.0015

```

1.11 User manual - forcing

1.11.1 Overview

The input for SFINCS is supplied using various text and binary files, which are linked through the main input file: `sfincs.inp`. Within this section of the user manual all different types of forcing settings and files are discussed. The figure below gives an overview of all different types of input files and whether they are required or not. Below an example is given of this file, which uses a keyword/value layout. For more information regarding specific parameters see the pages ‘Input parameters’ or ‘Output parameters’.

NOTE - In the manual below, blocks named ‘Matlab example using OET’ are included, referring to easy setup scripts included in the SFINCS’ Open Earth Tools Matlab set of scripts: <https://svn.oss.deltares.nl/repos/openearthtools/trunk/matlab/applications/sfincs>

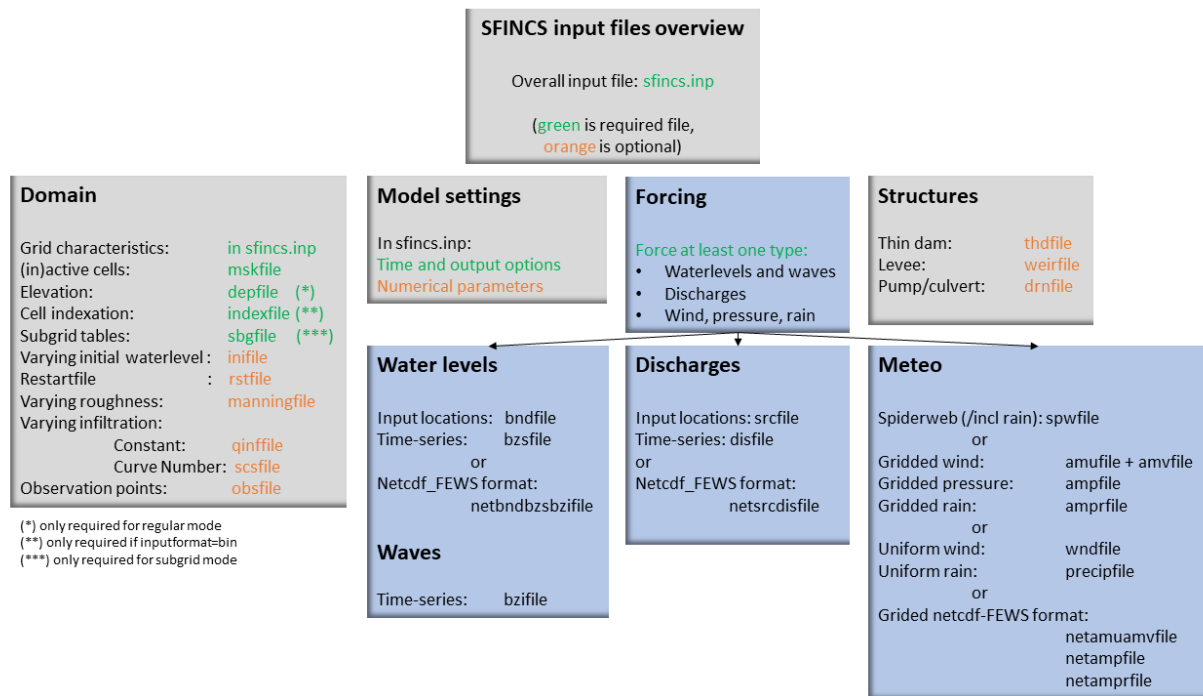


Fig. 1.15: Overview of input file of SFINCS with indication whther they are required or not

Forcing

SFINCS has different functionalities regarding different relevant physical processes for compound flooding and what type of model is required. At first nearshore/offshore water levels can be specified at the different locations along the coast to include tides and storm surge levels. Inland drivers of flooding like precipitation and wind can be specified in a number of ways. This varies from simple spatially uniform time-series to spatially varying spiderwebs or grid input types. Furthermore, simple implementations for discharges are included.

Discussed in this user manual are the water-level boundaries, discharge points, wind, pressure, rain and waves.

1.11.2 Water levels

To specify water-level time-series to the boundary cells (msk=2), first the input locations have to be specified in 'sfincs.bnd'. For every boundary point there is interpolated with a weighted average between the two closest input locations.

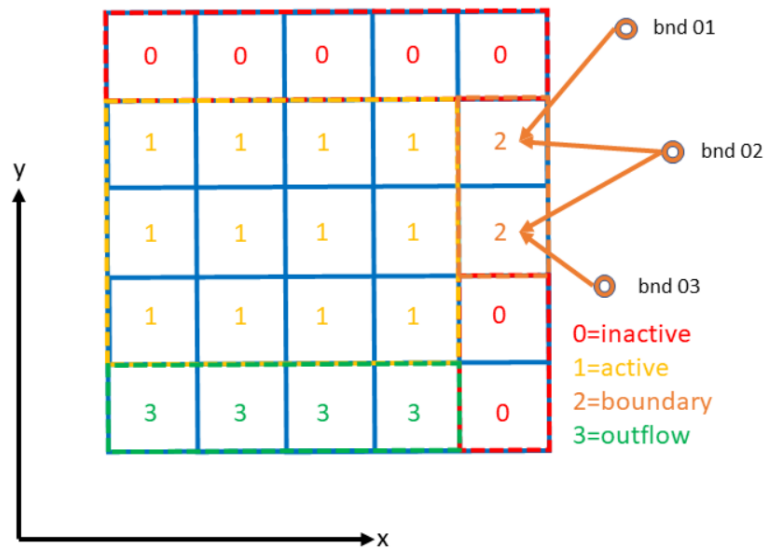


Fig. 1.16: Example of the weighted interpolation of boundary input locations to the msk=2 boundary cells.

Water level points

bndfile = sfincs.bnd

```
<bnd1 x1> <bnd1 y1>
```

```
<bnd2 x2> <bnd2 y2>
```

e.g.

```
400000 1200000
```

```
480000 1250000
```

Matlab example using OET

```
points.x(1) = 400000;
points.y(1) = 1200000;
points.x(2) = 480000;
points.y(2) = 1250000;

sfincs_write_boundary_points(inp.bndfile,points)
```

Water level time-series

Then in the file 'sfincs.bzs' the water level time-series are specified per input location. Times are specified in seconds with respect to SFINCS' internal reference time 'tref', as specified in sfincs.inp.

NOTE - The time and length of values you prescribe per boundary input location should be all the same in the bzsfile

bzsfile = sfincs.bzs

```
<time 1> <zs1 bnd1> <zs1 bnd2>

<time 2> <zs2 bnd1> <zs2 bnd2>

e.g.
0      0.50    0.75
3600   0.60    0.80
7200   0.45    0.85
```

Matlab example using OET

```
time = [0, 3600, 7200];
waterlevels = [0.5, 0.75; 0.6, 0.8; 0.45, 0.85];

sfincs_write_boundary_conditions(inp.bzsfile,time,waterlevels)
```

1.11.3 Waves

When forcing waves, besides providing a bzsfile with slowly varying water level time-series, also the same type of file with the quickly varying water level component due to waves can be prescribed. This can contain infragravity and/or short waves. Do note that the forced signal should be the incoming wave component only, not including the reflecting one, since this is computed by SFINCS internally as well. The signal should be around 0.

NOTE - Specified time should be the same in both the bzs and bzi files

bzifile = sfincs.bzi

```
<time 1> <zi1 bnd1> <zi1 bnd2>

<time 2> <zi2 bnd1> <zi2 bnd2>

e.g.
0      0.05    0.07
2      -0.02   -0.04
4      0.10    0.03
```

Netcdf format input

As alternative, the bnd/bzs/bzi data can also be specified using a single Netcdf file with FEWS input type format 'netbndbzsبزifile'. Making this format netcdf file can be easily done using the OET Matlab script 'sfincs_write_netcdf_bndbzsبزifile.m'

Matlab example using OET

```
inp.netbndbzsبزifile = 'sfincs_netbndbzsبزifile.nc';

x = [0, 100, 200];
y = [50, 150, 250];

EPSGcode = 32631;
UTMname = 'UTM31N';

refdate = '1970-01-01 00:00:00';
% possibly use formatOut = 'yyyy-mm-dd HH:MM:SS'; datestr(tref, formatOut);

time = [0, 60];

rng('default');
bzs = -1 * randi([0 10],length(time),length(x));
bzi = -1 * randi([0 10],length(time),length(x));

sfincs_write_netcdf_bndbzsبزifile(inp.netbndbzsبزifile, x, y, EPSGcode, UTMname, refdate,
↪ time, bzs, bzi)
```

1.11.4 Discharges

A simple implementation of discharge points is added to SFINCS, specify values in m^3/s . First specify the locations in 'sfincs.src' and then the discharge time-series in 'sfincs.dis'. Alternatively, you can provide this as netcdf file in the Delft-FEWS format.

Discharge points

srcfile = sfincs.src

```
<src1 x1> <src1 y1>

<src2 x2> <src2 y2>

e.g.
300000 1500000
380000 1650000
```

Matlab example using OET

```
points.x(1) = 300000;
points.y(1) = 1500000;
points.x(2) = 380000;
points.y(2) = 1650000;
```

(continues on next page)

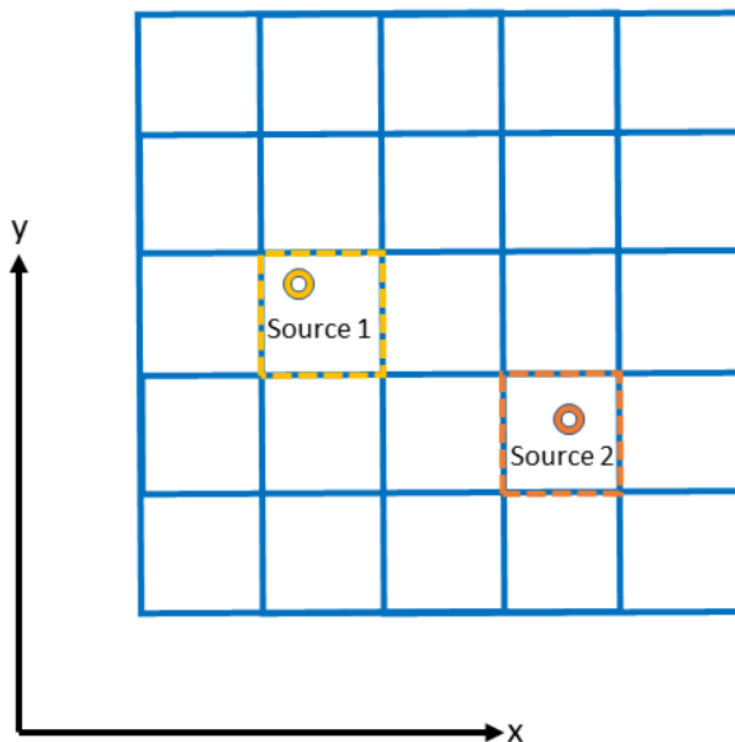


Fig. 1.17: Example of how discharge input points from 2 different sources are snapped to the grid of SFINCS.

(continued from previous page)

```
sfincs_write_boundary_points(inp.srcfile,points)
```

Discharge time-series

Then in the file 'sfincs.dis' the discharge time-series are specified per input location. Times are specified in seconds with respect to SFINCS' internal reference time 'tref', as specified in sfincs.inp.

disfile = sfincs.dis

```
<time 1> <dis1 src1> <dis1 src2>
```

```
<time 2> <dis2 src1> <dis2 src2>
```

e.g.

```
0      100    1000
3600   300    1100
7200   0      1300
```

Matlab example using OET

```
time = [0, 3600, 7200];
discharge = [100, 1000; 300, 1100; 0, 1300];
```

(continues on next page)

(continued from previous page)

```
sfincs_write_boundary_conditions(inp.disfile,time,discharge)
```

Netcdf format input

As alternative, the src/dis data can also be specified using a single Netcdf file with FEWS input type format 'netsrcdisfile'. SFINCS assumes that the input variables 'x', 'y', 'time', 'discharge' and 'stations' are available in the netcdf file, including a reference time as UNIT in variable 'time' of the Few's time format: "minutes since 1970-01-01 00:00:00.0 +0000"

Matlab example using OET

```
inp.netsrcdisfile = 'sfincs_netsrcdisfile.nc';

x = [0, 100, 200];
y = [50, 150, 250];

EPSGcode = 32631;
UTMname = 'UTM31N';

refdate = '1970-01-01 00:00:00';
% possibly use formatOut = 'yyyy-mm-dd HH:MM:SS'; datestr(tref, formatOut);

time = [0, 60];

rng('default');
dis = -1 * randi([0 10],length(time),length(x));

sfincs_write_netcdf_srcdisfile(inp.netsrcdisfile, x, y, EPSGcode, UTMname, refdate, time,
↪ dis)
```

1.11.5 Meteo

There are a few different options to specify wind and rain input:

- 1) Use a spatially varying input in a polar coordinate system ('spiderweb'; as in Delft3D/Delft3D FM) for forcing tropical cyclones for wind and pressure input only, or also for rainfall.
- 2) Use a spatially varying grid input (as in Delft3D) for u- and v- wind velocities and/or the rain and/or pressure input.
- 3) Use a spatially varying grid input using a netcdf file based on a FEWS input type format for wind, rain, and/or atmospheric pressure input.
- 4) Use a spatially uniform input for wind and rain, which is faster but also more simplified.
- 5) Make a combination, for instance use a spiderweb for the wind input and a spatially uniform rain-input. When combining, test whether the forcing is as wanted since not all combinations of the above options might be possible and/or changing depending on specific code version.

You can know how much rainfall / wind is added to the model in the output by specifying 'storecumprcp=1' and/or 'storemeteo=1', see the description in "Input parameters".

Meteo	
Spiderweb (/incl rain): spwfile	
or	
Gridded wind:	amufile + amvfile
Gridded pressure:	ampfile
Gridded rain:	amprfile
or	
Uniform wind:	wndfile
Uniform rain:	precipfile
or	
Gridded netcdf-FEWS format:	
	netamuamvfile
	netampfile
	netamprfile

Fig. 1.18: Overview of possible meteo input file options and names

Spatially varying spiderweb

The option of forcing spiderweb files is only relevant for tropical cyclones, as these time and spatially varying wind fields are constructed and written in a polar coordinate system. For generation of these spiderweb files use Deltares' Wind Enhancement Scheme tool (WES, see https://content.oss.deltares.nl/delft3d/manuals/Delft3D-WES_User_Manual.pdf, OET Matlab equivalent, the Coastal Hazards Toolkit or other methods). If you have issues with the generation of a spiderweb, feel free to get in touch. There are two options for spatially varying spiderweb. There is the 'traditional' ASCII format and the netcdf option. Both options support the possibility to include rainfall too.

Spiderweb-input-ascii:

```
spwfile = tropical_cyclone.spw
```

Spiderweb-input-netcdf:

```
netspwfile = tropical_cyclone.nc
```

Spatially varying gridded

Spatially varying meteo input on constant grid can be forced using the native Delft3D type meteo input files, using the same file conventions. For wind this is wind in x-&y-direction (amu, amv), precipitation (ampr) and atmospheric pressure (amp). The grid has a constant resolution dx&dy, which can be in the native (usually coarser than your SFINCS grid) resolution of the meteo data. Within SFINCS this is interpolated onto the actual SFINCS grid.

Wind:

```
**amufile = sfincs.amu**  
  
within amufile:
```

(continues on next page)

(continued from previous page)

```
quantity1      = x_wind
unit1           = m s-1
```

```
**amvfile = sfincs.amv**
```

```
within amvfile:
```

```
quantity1      = y_wind
unit1           = m s-1
```

Rain:

```
**amprfile = sfincs.ampr**
```

```
within amprfile:
```

```
quantity1      = precipitation
unit1           = mm/hr
```

Atmospheric pressure:

```
**ampfile = sfincs.amp**
```

```
within ampfile:
```

```
quantity1      = air_pressure
unit1           = Pa
```

Delft3D-meteo ascii type input:

These files have this general header of **13 lines** which SFINCS expects (**Check this after creating your input files!**), after which the TIME and data blocks are given per time frame. Only use 1 quantity per file:

```
FileVersion      = 1.03
filetype         = meteo_on_equidistant_grid
n_cols           = 2
n_rows           = 4
grid_unit        = m
x_llcorner       = 417328
y_llcorner       = 3495537
dx               = 5000
dy               = 5000
n_quantity       = 1
quantity1        = x_wind
unit1            = m s-1
NODATA_value     = -999
TIME = 90831.0 hours since 1970-01-01 00:00:00 +00:00 # 1980-05-12 15:00:00
0 0 0 0
0 0 0 0
TIME = 90831.0 hours since 1970-01-01 00:00:00 +00:00 # 1980-05-12 15:00:00
0 0 0 0
0 0 0 0
```

Matlab example using OET


```

data.parameter.time = datenum(2018,01,01):3/24:datenum(2018,01,02);
data.parameter.x = 0:5000:25000;
data.parameter.y = 10000:5000:40000;

data.parameter.val = ones(length(data.parameter.time), length(data.parameter.y),
↳ length(data.parameter.x));

write_meteo_file_delft3d(inp.amufile, data, 'x_wind', 'm s-1', datenum(1970,01,01),
↳ varargin);

see 'write_meteo_file_delft3d.m' for more information.

```

Spatially varying gridded netcdf

The same spatially varying gridded input as using Delft3d' ascii input files can be specified using FEWS compatible Netcdf input files. Here for the wind the amu&amv files are combined into 1 Netcdf file (netamuamvfile), the precipitation is in a separate input file (netamprfile) as well as the atmospheric pressure (netampfile).

Making this format netcdf file can be easily done using the OET Matlab scripts 'sfincs_write_netcdf_amuamvfile.m', 'sfincs_write_netcdf_amprfile.m' and 'sfincs_write_netcdf_ampfile.m'. See those files for more information.

Matlab example using OET - netamuamvfile

```

inp.netamuamvfile = 'sfincs_netamuamvfile.nc';

x = [0, 100, 200];
y = [50, 150, 250];

EPSGcode = 32631;
UTMname = 'UTM31N';

refdate = '1970-01-01 00:00:00';
% possibly use formatOut = 'yyyy-mm-dd HH:MM:SS'; datestr(tref, formatOut);

time = [0, 60];

rng('default');
amu = -1 * randi([0 10],length(time),length(y),length(x));
amv = 1 * randi([0 10],length(time),length(y),length(x));

sfincs_write_netcdf_amuamvfile(inp.netamuamvfile, x, y, EPSGcode, UTMname, refdate, time,
↳ amu, amv)

```

Matlab example using OET - netamprfile

```

inp.netamprfile = 'sfincs_netamprfiles.nc';

x = [0, 100, 200];
y = [50, 150, 250];

EPSGcode = 32631;
UTMname = 'UTM31N';

```

(continues on next page)

(continued from previous page)

```
refdate = '1970-01-01 00:00:00';
% possibly use formatOut = 'yyyy-mm-dd HH:MM:SS'; datestr(tref, formatOut);

time = [0, 60];

rng('default');
amp = -1 * randi([0 10],length(time),length(y),length(x));

sfincs_write_netcdf_ampfile(inp.netampfile, x, y, EPSGcode, UTMname, refdate, time,
↪amp)
```

Matlab example using OET - netampfile

```
inp.netampfile = 'sfincs_netampfiles.nc';

x = [0, 100, 200];
y = [50, 150, 250];

EPSGcode = 32631;
UTMname = 'UTM31N';

refdate = '1970-01-01 00:00:00';
% possibly use formatOut = 'yyyy-mm-dd HH:MM:SS'; datestr(tref, formatOut);

time = [0, 60];

rng('default');
amp = -1 * randi([0 10],length(time),length(y),length(x));

sfincs_write_netcdf_ampfile(inp.netampfile, x, y, EPSGcode, UTMname, refdate, time, amp)
```

Spatially uniform

Spatially uniform wind:

‘vmag’ is the wind speed in m/s, ‘vdir’ is the wind direction in nautical from where the wind is coming. The file can be made using OET Matlab script ‘sfincs_write_boundary_conditions.m’. Times are specified in seconds with respect to SFINCS’ internal reference time ‘tref’, as specified in sfincs.inp.

wndfile = sfincs.wnd

```
<time 1> <vmag1> <vdir1>

<time 2> <vmag2> <vdir2>

e.g.
0      5      120
3600   15     180
7200   10     165
```

Spatially uniform rain:

Rain input in mm/hr, times are specified in seconds with respect to SFINCS’ internal reference time ‘tref’, as specified in sfincs.inp. The file can be made using OET Matlab script ‘sfincs_write_boundary_conditions.m’.

precipfile = sfincs.prep

```
<time 1> <prcp0>
```

```
<time 2> <prcp1>
```

e.g.

```
0      0
3600   15
7200   10
```

1.12 User manual - structures

1.12.1 Overview

The input for SFINCS is supplied using various text and binary files, which are linked through the main input file: `sfincs.inp`. Within this section of the user manual all different types of structures to reduce flood hazards with input settings and files are discussed. The figure below gives an overview of all different types of input files and whether they are required or not. Below an example is given of this file, which uses a keyword/value layout. For more information regarding specific parameters see the pages ‘Input parameters’ or ‘Output parameters’.

NOTE - In the manual below, blocks named ‘Matlab example using OET’ are included, referring to easy setup scripts included in the SFINCS’ Open Earth Tools Matlab set of scripts: <https://svn.oss.deltares.nl/repos/openearthtools/trunk/matlab/applications/sfincs>

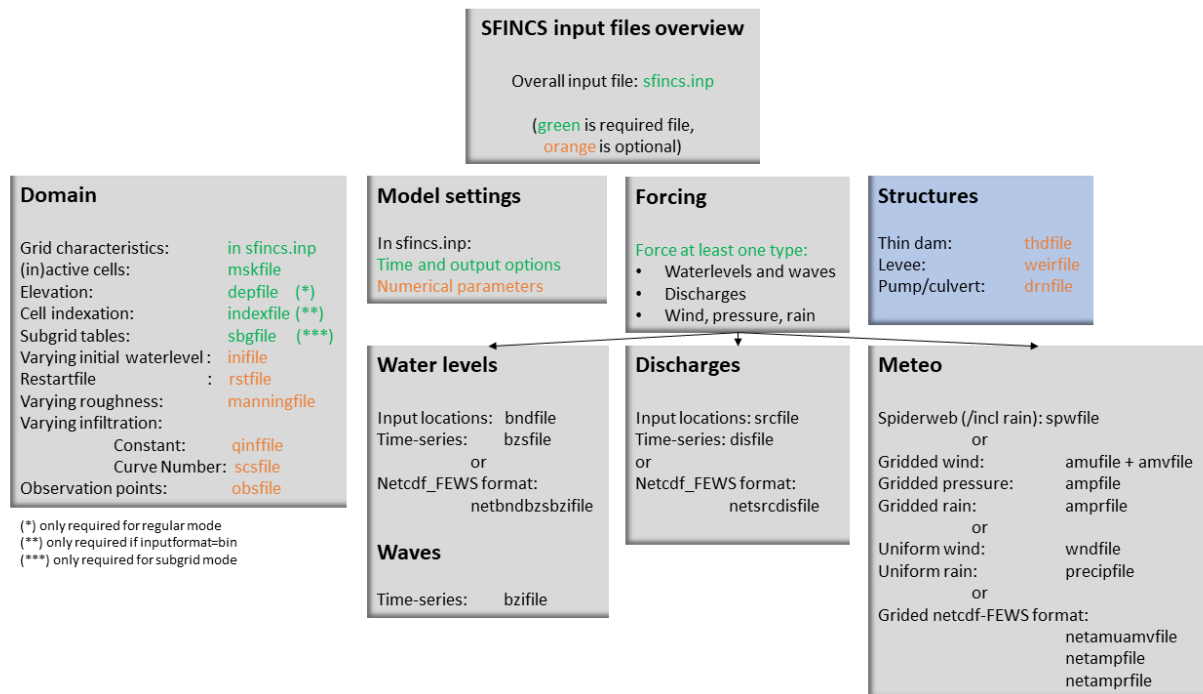


Fig. 1.19: Overview of input file of SFINCS with indication whether they are required or not

1.12.2 Structures

SFINCS consists of multiple options for adding structures that can divert or block flow of water, which can be used to simulate flood hazard reduction methods.

Thin dam

With a thin dam flow through certain grid cells is completely blocked (i.e. an infinitely high wall). One can provide multiple polylines within one file, a maximum of 5000 supplied points is supported. The supplied polylines are snapped onto the SFINCS grid within the model.

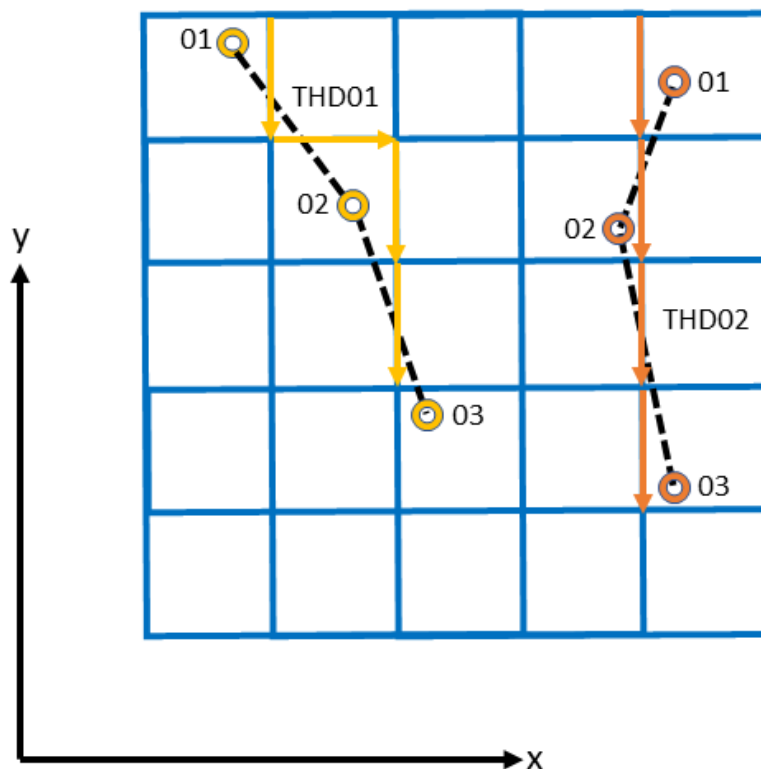


Fig. 1.20: Example of how thin dam/weir input points from 2 different polylines are snapped to the grid of SFINCS.

thdfile = sfincs.thd

```
NAME1
2 2 %size data
<x0> <y0> %start of polyline 1
<xend> <yend> %end of polyline 1

NAME2
2 2 %size data
<x0> <y0> %start of polyline 2
<xend> <yend> %end of polyline 1

e.g.
```

(continues on next page)

(continued from previous page)

```

THD01
3 2
0 100
10 100
20 100
THD02
2 2
20 200
25 200

```

Matlab example using OET

```

inp.thdfile = 'sfincs.thd';

thindams(1).x = [0 10 20];
thindams(1).y = [100 100 100];
thindams(1).name = {'THD01'};
thindams(2).x = [20 25];
thindams(2).y = [200 200];
thindams(2).name = {'THD02'};
thindams.length = length(thindams.x1);

sfincs_write_thin_dams(inp.thdfile,thindams);

```

Weirs

Weirs are in principle the same as a thin dam, but then with a certain height (levee). When the water level on either or both sides of the weir are higher than that of the weir, a flux over the weir is calculated. Hereby a situation where the weir is partly or fully submerged is distinguished. One can provide multiple polylines within one file, a maximum of 5000 supplied points is supported. Besides the x&y locations per points, also the elevation z and a Cd coefficient for the weir formula (recommended to use 0.6). The supplied polylines are snapped onto the SFINCS grid within the model.

The snapped coordinates are available in sfincs_his.nc as structure_x, structure_y & structure_height from SFINCS v2.0.2 onwards.

weirfile = sfincs.weir

```

NAME1
2 4 %size data
<x0> <y0> <z0> <cd1> %start of polyline 1
<x2> <y2> <z2> <cd2> %end of polyline 1

NAME2
2 4 %size data
<x0> <y0> <z0> <cd1> %start of polyline 2
<x2> <y2> <z2> <cd2> %end of polyline 2

e.g.

weir01
3 4

```

(continues on next page)

(continued from previous page)

```

0 100 5.1 0.6
10 100 5.2 0.6
20 100 5.0 0.6
weir02
2 4
20 200 5.1 0.6
25 200 5.1 0.6

```

Matlab example using OET

```

inp.weirfile = 'sfincs.weir';

weirs(1).x = [0 10 20];
weirs(1).y = [100 100 100];
weirs(1).z = [5.1 5.2 5.0];
weirs(1).par1 = [0.6 0.6 0.6];
weirs(2).x = [20 25];
weirs(2).y = [200 200];
weirs(2).z = [5.1 5.2];
weirs(2).par1 = [0.6 0.6];

sfincs_write_obstacle_file_1par(inp.weirfile,weirs)

```

Drainage pump and Culvert

Drainage pumps and culverts are both specified using the same format file, put with a different indication of the type (type=1 is drainage pump, type=2 is culvert). A drainage pump can move water from one location to another with a certain prescribed discharge given that there is sufficient water at the retraction location. For culverts also a certain discharge capacity parameter of the culvert is prescribed, but then the actual water level gradient is used to determine how much water will actually flow through the culvert. Input consists of the x&y locations of the sink (retraction point) and source points (outflow point) followed by the type. The discharge capacity is prescribed using the par1 parameter, parameters par2<>par5 are not used right now but included for future flexibility for implementing other structure types. For the culvert, par1 can be calculated as $par1 = \mu * A * \sqrt{2g}$, with μ =dimensionless culvert loss coefficient [-], A =area of the culvert opening in $[m^2]$ and $g=9.81m/s^2$.

You can know how much discharge is extracted by the model in the sfincs_his.nc output by specifying 'storeqdrain=1' from SFINCS v2.0.2 onwards, see the description in "Input parameters".

drnfile = sfincs.drn

```

<xsnk1> <ysnk1> <xsrc1> <ysrc1> <type1> <par1-1> par2-1 par3-1 par4-1 par5-1
<xsnk2> <ysnk2> <xsrc2> <ysrc2> <type2> <par1-2> par2-2 par3-2 par4-2 par5-2

```

e.g. pump:

```

50.00      25.00      150.00      25.00 1      0.345      0.000      0.000      0.000      0.
↪000
75.00      25.00      125.00      25.00 1      0.345      0.000      0.000      0.000      0.
↪000

```

e.g. culvert:

```

50.00      25.00      150.00      25.00 2      0.345      0.000      0.000      0.000      0.
↪000

```

(continues on next page)

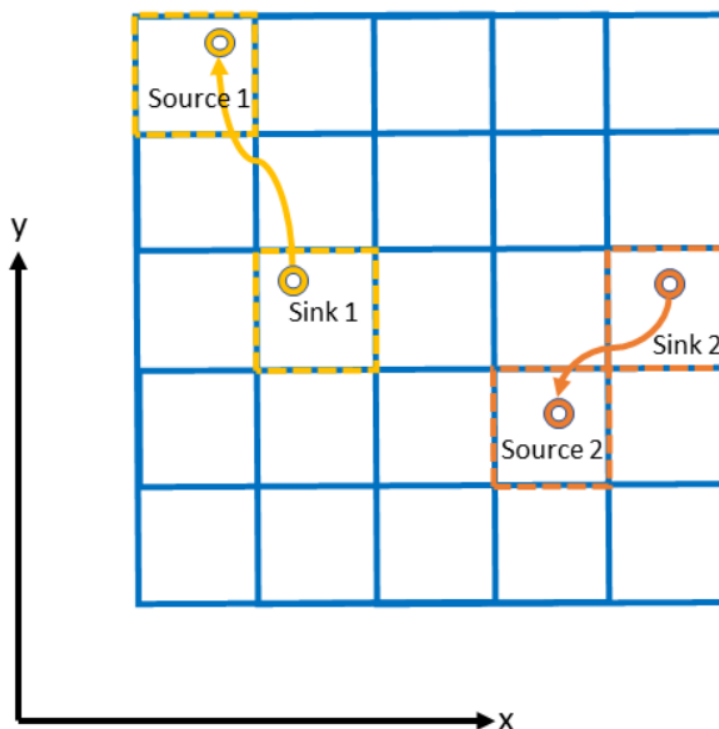


Fig. 1.21: Example of how drainage pump/culvert input points with sink and source locations from 2 different structures are snapped to the grid of SFINCS.

(continued from previous page)

75.00	25.00	125.00	25.00	2	0.345	0.000	0.000	0.000	0.
→000									

Matlab example using OET

```
inp.drnfile = 'sfincs.drn';

jj=1;
drain(jj).xsnk = 75;    % sink x-coordinate(s), from where water is taken
drain(jj).ysnk = 25;    % sink y-coordinate(s)
drain(jj).xsrc = 125;   % source x-coordinate(s), to where water is discharged
drain(jj).ysrc = 25;    % source x-coordinate(s)
drain(jj).type = 1;     % 1= pump, 2=culvert
drain(jj).par1 = 0.345; % drainage discharge capacity parameter par1 = mu*a*sqrt(2g)
drain(jj).par2 = 0;     % not used yet
drain(jj).par3 = 0;     % not used yet
drain(jj).par4 = 0;     % not used yet
drain(jj).par5 = 0;     % not used yet

sfincs_write_drainage_file(inp.drnfile,drain)
```

1.13 Input parameters

Different parameters for model input and output of SFINCS can be changed in **sfincs.inp**, see below.

Traditionally SFINCS neglects the advection term in the SFINCS-LIE version ('advection = 0'). For super-critical flow conditions or modelling waves, the SFINCS-SSWE version can be used ('advection = 1' for 1D modelling and 'advection = 2' for 2D modelling) for better performance.

1.13.1 Parameters for model input

mmax

description

Number of grid cells in x-direction

units

•

default

0

min

1

max

Inf (recommended is to limit the total number of active cells to max 3 million)

nmax

description

Number of grid cells in y-direction

units

•

default

0

min

1

max

Inf (recommended is to limit the total number of active cells to max 3 million)

dx

description

Grid size in x-direction

units

m

default

0

min

1.0e-3

max

Inf (recommended is a maximum grid size of 1000 meters)

dy

description

Grid size in y-direction

units

m

default

0

min

1.0e-3

max

Inf (recommended is a maximum grid size of 1000 meters)

x0

description

X-coordinate of first grid cell corner (1,1), thus not center of grid cell, in projected UTM zone.

units

m in projected UTM zone

default

0

min

0

max

Inf

y0

description

Y-coordinate of first grid cell corner (1,1), thus not center of grid cell, in projected UTM zone.

units

m in projected UTM zone

default

0

min

0

max

Inf

rotation

description

Rotation of the grid in degrees from the x-axis (east) in anti-clockwise direction

units

degrees

default

0

min

0

max

359.999

advection

description

setting for advection. 0 for no advection scheme (SFINCS-LIE), 1 for 1D advection scheme for modelling in 1D OR 2 for 2D advection scheme for modelling in 2D (SFINCS-SSWE).

units

•

default

0

min

0

max

2

alpha

description

CFL-condition reduction. Decrease for additional numerical stability, minimum value is 0.1 and maximum is 0.75.

units

•

default

0.5

min

0.1 (recommended)

max

0.75 (recommended)

huthresh

description

Minimum flow depth limiter.

units

m

default

0.05

min

0.001 (recommended)

max

0.1 (recommended)

theta

description

Smoothing factor in momentum equation.

units

•

default

0.9

min

0.8

max

1.0

viscosity
description

Turns on the viscosity term in the momentum equation (viscosity = 1), advised to combine with theta = 1.0. Value of viscosity term 'nuisc' automatically determined based on grid size..

units

•

default

0

min

0

max

1

nuiscdim
description

Dimensionless viscosity coefficient, multiplies the automatically determined value for 'nuisc' with the specified factor for 'nuiscdim'.

units

•

default

1.0

min

0.0

max

Inf

nuisc
description

Viscosity coefficient, by default turned off, but automatically determined if 'viscosity=1'. specifying a value for 'nuisc' overrule default value.

units

•

default
-999.0 (=off)

min
0.0

max
Inf

zsini

description
Initial water level.

units
m above reference level

default
0

min
-Inf

max
Inf

qinf

description
Infiltration rate, specify in +mm/hr.

units
mm/hr

default
0

min
0

max
100

qinf_zmin

description
Minimum elevation level above for what cells the spatially uniform, constant in time infiltration rate ‘qinf’ is added.

units
m above reference level

default
0

min
-100

max
100

manning

description
Uniform manning roughness, specify in $s/m^{(1/3)}$.

units
s/m^{1/3}

default
0.04

min
0

max
0.1 (advised)

rgh_level_land

description
Elevation level to distinguish land and sea roughness (when using 'manning_land' and 'manning_sea').

units
m above reference level

default
0

min
-Inf

max
Inf

manning_land

description
Varying manning roughness based on elevation (above 'rgh_level_land', overrules uniform 'manning', specify in s/m^{1/3}).

units
s/m^{1/3}

default
-999 (=not used)

min
0

max
0.1 (advised)

manning_sea

description
Varying manning roughness based on elevation (below 'rgh_level_land', overrules uniform 'manning', specify in s/m^{1/3}).

units
s/m^{1/3}

default
-999 (=not used)

min
0

max
0.1 (advised)

1.13.2 More parameters for model input (only for advanced users)

bndtype

description

Boundary type for interpretation of ‘sfincs.bzs’ time-series. bndtype=1 is for water levels, old types 2&3 have been removed from SFINCS v2.0.2 onwards.

units

•

default

1

min

1

max

1

rhoa

description

Density of the air

units

kg/m3

default

1.25

min

•

max

•

rhow

description

Density of the water

units

kg/m3

default

1024

min

•

max

•

stopdepth

description

Water depth anywhere in the domain after which the simulation is classified as unstable and stopped

units

m

default

100

min

0

max

Inf

advlim
description

Advection limiter when advection>0 to limit the magnitude of the advection term when calculating fluxes between cells.

units

•

default

9999

min

0

max

9999

dtmax
description

Maximum internal time step to be used

units

s

default

60

min

1.0e-3

max

Inf

dtmin
description

Minimum internal time step to be used

units

s

default

1.0e-3

min

1.0e-3

max
Inf

tspinup

description
Duration of internal spinup period before tstart

units
s

default
60

min
0

max
Inf

Drag coefficients:

cdnrb

description
Number of specified break points

units
•

default
3

min
2

max
•

cdwnd

description
Wind speed break points (including 0)

units
•

default
0 28 50

min
2 values

max
•

description
Drag coefficient brak points

units
•

default
0.001 0.0025 0.0015

min
2 values

max
•

Different parameters influencing the given output by SFINCS can be changed, see below.

1.13.3 Parameters for model output

tref

description
Reference date in ‘yyyymmdd HHMMSS’

units
•

default
20000101 000000

tstart

description
Start date in ‘yyyymmdd HHMMSS’

units
•

default
20000101 000000

tstop

description
Stop date in ‘yyyymmdd HHMMSS’

units
m

default
20000101 000000

trstout

description
Specific time in seconds since ‘tref’ for binary restart file output being written away, turned of by default.

units
s

default
-999.0

dtout

description

Time-step global map output.

units

s

default

0

dthisout

description

Time-step observation points output.

units

s

default

600

dtmaxout

description

Time-step interval of global map output of maximum water level. If not specified, the maximum over the entire simulation is calculated. If no output is wanted, specify 'dtmaxout = 0'.

units

s

default

9999999

min

0

max

'tstop - start in seconds'

dtrstout

description

Time-step for binary restart file output being written away, turned off by default.

units

s

default

0

dtwnd

description

Time-interval wind update (only for spiderweb)

units

s

default

1800

outputformat

description

Choice whether the SFINCS model output is given in binary 'bin', ascii 'asc' or netcdf

files 'net' (default). In case of netcdf output, global output is given in 'sfincs_map.nc', point output in 'sfincs_his.nc' in case observation points are specified.

units

-

default

net

twet_threshold**description**

Threshold value of water depth to count cell as flooded for keeping track of wet cells with storetwet = 1

units

m

default

0.01

storetwet**description**

Flag to turn on writing away duration that a cell was wet during simulation (storetwet = 1)

units

-

default

0

storevel**description**

Flag to turn on writing away velocities on 'dtout' interval during simulation (storevel = 1)

units

-

default

0

storevelmax**description**

Flag to turn on writing away maximum velocities on 'dtmaxout' interval during simulation (storevelmax = 1)

units

-

default

0

storefluxmax**description**

Flag to turn on writing away maximum flux on 'dtmaxout' interval during simulation (storefluxmax = 1)

units

•

default

0

storecumprcp

description

Flag to turn on writing away cumulative precipitation on ‘dtmaxout’ interval during simulation (storecumprcp = 1)

units

•

default

0

storehsubgrid

description

Flag to turn on writing away unaccurate water depth estimate for subgrid mode on ‘dtmaxout’ interval during simulation (storehsubgrid = 1)

units

•

default

0

storeqdrain

description

Flag to turn on writing away drainage discharge during simulation (storeqdrain = 1)

units

•

default

0

storezvolume

description

Flag to turn on writing away water volumes for the subgrid mode during simulation (storezvolume = 1)

units

•

default

0

storemeteo

description

Flag to turn on writing away meteo input data during simulation (storemeteo = 1)

units

•

default
0

storemaxwind

description
Flag to turn on writing away maximum wind speed during simulation (storemaxwind = 1)

units
•

default
0

debug

description
Flag to turn on writing away every timestep to output as debug mode (debug = 1)

units
•

default
0

1.14 Input files

SFINCS consists of many different input files, this overview gives a description, whether they are required or not, unit and format (bin = binary, asc = ascii and net = netcdf).

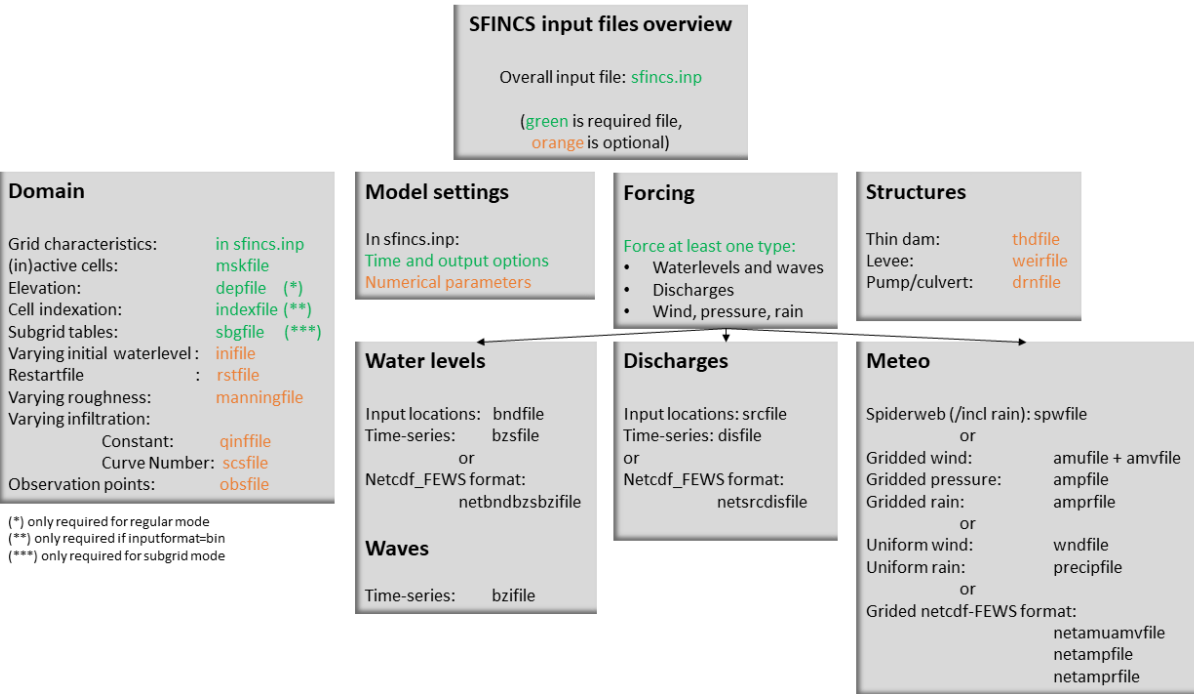


Fig. 1.22: Overview of input file of SFINCS with indication whther they are required or not

1.14.1 Domain

sfincs.inp

description

General input file of SFINCS describing all model settings, the domain, forcing and structures.

required

yes

format

asc

depfile = sfincs.dep

description

Elevation (bathymetry and topography) at grid cell centres above a reference level.

units

m above reference level

required

yes in case of regular mode, no in case of subgrid mode

format

bin or asc

mskfile = sfincs.msk

description

This mask indicates for every cell whether it is an inactive cell (msk=0), active cell (msk=1), boundary cell (msk=2) or outflow boundary cell msk=3).

units

•

required

yes

format

bin or asc

indexfile = sfincs.ind

description

File describing the indices of active grid cells within the overall grid. Not used by SFINCS with ascii input.

units

•

required

Only if 'inputformat = bin'

format

bin

mskfile = sfincs.msk

description

This mask indicates for every cell whether it is an inactive cell (msk=0), active cell (msk=1), water level boundary cell (msk=2) or outflow boundary cell msk=3).

units

-

required

yes

format

bin or asc

manningfile = sfincs.manningfile**description**

For spatially varying friction values per cell use the manningfile option, with the same grid based input as the depfile using a binary file. Not used by SFINCS in subgrid mode.

units $s/m^{1/3}$ **required**

no in case of regular mode, ignored in case of subgrid mode

format

bin

qinfile = sfincs.qinfile**description**

For spatially varying constant in time infiltration values per cell use the qinfile option, with the same grid based input as the depfile using a binary file.

units

mm/hr

required

no

format

bin

scsfile = sfincs.scsfile**description**

For spatially varying infiltration values per cell using the Curve Number method A (without recovery) use the scsfile option, with the same grid based input as the depfile using a binary file.

units

-

required

no

format

bin

smaxfile = sfincs.smaxfile**description**

For spatially varying infiltration values per cell using the Curve Number method B (with recovery) provide the smaxfile (as well as the seffile and ksfile) as maximum

soil moisture storage capacity in m, with the same grid based input as the depfile using a binary file.

units

m

required

no

format

bin

sefffile = sfincs.seff

description

For spatially varying infiltration values per cell using the Curve Number method B (with recovery) provide the sefffile (as well as the smaxfile and ksfile) as soil moisture storage capacity at the start in m, with the same grid based input as the depfile using a binary file.

units

m

required

no

format

bin

ksfile = sfincs.ks

description

For spatially varying infiltration values per cell using the Curve Number method B (with recovery) provide the ksfile (as well as the smaxfile and sefffile) as saturated hydraulic conductivity in mm/hr, with the same grid based input as the depfile using a binary file.

description

For spatially varying infiltration values per cell using the Green & Ampt method (with recovery) provide the ksfile (as well as the sigmafile and psfile) as saturated hydraulic conductivity in mm/hr, with the same grid based input as the depfile using a binary file.

units

mm/hr

required

no

format

bin

sigmafile = sfincs.sigma

description

For spatially varying infiltration values per cell using the Green & Ampt method (with recovery) provide the sigmafile (as well as the psfile and ksfile) as suction head at the wetting front in mm, with the same grid based input as the depfile using a binary file.

units

mm

required

no

format

bin

psifile = sfincs.psi

description

For spatially varying infiltration values per cell using the Green & Ampt method (with recovery) provide the psifile (as well as the sigmafile and ksfile) as soil moisture deficit in [-], with the same grid based input as the depfile using a binary file.

units

•

required

no

format

bin

f0file = sfincs.f0

description

For spatially varying infiltration values per cell using the Horton method (with recovery) provide the f0file (as well as the fcfile and kdfile) as maximum (Initial) Infiltration Capacity in mm/hr, with the same grid based input as the depfile using a binary file.

units

mm/hr

required

no

format

bin

fcfile = sfincs.fc

description

For spatially varying infiltration values per cell using the Horton method (with recovery) provide the fcfile (as well as the f0file and kdfile) as Minimum (Asymptotic) Infiltration Rate in mm/hr, with the same grid based input as the depfile using a binary file.

units

mm/hr

required

no

format

bin

kdfile = sfincs.kd

description

For spatially varying infiltration values per cell using the Horton method (with recovery) provide the kdfile (as well as the f0file and fcfile) as empirical constant (hr-1) of decay, with the same grid based input as the depfile using a binary file.

units

hr-1

required

no

format

bin

sbgfile = sfincs.sbg

description

File containing subgrid tables, only needed by SFINCS if you want to run your model in the subgrid mode.

units

•

required

Only for running SFINCS in subgrid mode

format

bin

obsfile = sfincs.obs

description

To get output time-series at individual point locations, observations points have to be specified.

units

m in projected UTM zone

required

no (only if point output is wanted)

format

asc

crsfile = sfincs.crs

description

To get output time-series of discharge through a cross-section, cross_sections have to be specified.

units

m in projected UTM zone

required

no (only if cross-section output is wanted)

format

tekai

inifile = sfincs.ini

description

For spatially varying initial water level per cell, with the same grid based input as the depfile using a **binary file**. In older version this was an ascii file still, not from official release v2.0.0 onwards!

units

m above reference level

required

no

format
bin

rstfile = sfincs.rst

description

More advanced restartfile that can also contain fluxes and velocities. As produced by SFINCS if dtrstout > 0 OR trstout > 0. Type of restart - 1: zs, qx, qy, umean and vmean
- 2: zs, qx, qy - 3: zs

units

•

required

no

format

bin

1.14.2 Forcing - Water levels and waves

bndfile = sfincs.bnd

description

To specify water-level time-series to the boundary cells (msk=2), first the input locations have to be specified in 'sfincs.bnd'.

units

m in projected UTM zone

required

Only when specifying water levels and waves.

format

asc

bzsfile = sfincs.bzs

description

In the file 'sfincs.bzs' the (slowly varying) water level time-series are specified per input location.

units

m above reference level

required

Only when specifying water levels.

format

asc

bzifile = sfincs.bzi

description

In the file 'sfincs.bzi' the quickly varying water level time-series due to incoming waves are specified per input location. Do note that the input timestep should be the same in both the bzs and bzi files!

units

m around mean water level of bzsfile

required

Only when specifying waves.

format

asc

netbndbzsfile = sfincs_netbndbzsfile.nc

description

To specify all bnd, bzs (and bzi) input in 1 FEWS compatible netcdf input file. Specify either the netcdf version or ascii, not both.

units

m in projected UTM zone, m above reference level & m around mean water level of bzsfile

required

Only when specifying water levels and waves using netcdf input file.

format

net

1.14.3 Forcing - Discharges

srcfile = sfincs.src

description

To specify discharge points, first the input locations have to be specified in 'sfincs.src'.

units

m in projected UTM zone

required

Only when specifying discharges.

format

asc

disfile = sfincs.dis

description

In the file 'sfincs.dis' the discharge time-series are specified per input location.

units

m³/s

required

Only when specifying discharges.

format

asc

netsrcdisfile = sfincs_netsrcdisfile.nc

description

To specify all src & dis input in 1 FEWS compatible netcdf input file. Specify either the netcdf version or ascii, not both.

units

m in projected UTM zone, discharge in m³/s

required

Only when specifying discharges.

format

net

1.14.4 Forcing - Meteo

spwfile = sfincs.spw

description

Spiderweb file including wind speed, direction, pressure (and possibly rainfall).

units

coordinates: m in projected UTM zone, data: m/s, wind_from_direction in degrees, p_drop in Pa (and precipitation in mm/hr).

required

no

format

asc

netspwfile = spiderweb.nc

description

Spiderweb file including wind speed, direction, pressure (and possibly rainfall).

units

coordinates: m in projected UTM zone, data: m/s, wind_from_direction in degrees, p_drop in Pa (and precipitation in mm/hr).

required

no

format

netcdf

amufile = sfincs.amu

description

Delft3D-meteo ascii type input of wind speed in x-direction.

units

coordinates: m in projected UTM zone, data: m/s

required

no

format

asc

amvfile = sfincs.amv

description

Delft3D-meteo ascii type input of wind speed in y-direction.

units

coordinates: m in projected UTM zone, data: m/s

required

no

format

asc

ampfile = sfincs.amp

description

Delft3D-meteo ascii type input of atmospheric pressure.

units

coordinates: m in projected UTM zone, data: Pa

required

no

format

asc

amprfile = sfincs.ampr

description

Delft3D-meteo ascii type input of precipitation intensity.

units

coordinates: m in projected UTM zone, data: mm/hr

required

no

format

asc

wndfile = sfincs.wnd

description

Spatially uniform wind

units

wind speed in m/s, wind direction in nautical from where the wind is coming

required

no

format

asc

precipfile = sfincs.precp

description

Spatially uniform precipitation

units

mm/hr

required

no

format

asc

netamuamvfile = sfincs_netamuamvfile.nc

description

FEWS type netcdf meteo input with wind speed in both x-&y-direction in m/s.

units

coordinates: m in projected UTM zone, data: m/s

required

no

format

net

netampfile = sfincs_netampfile.nc

description

FEWS type netcdf meteo input with atmospheric pressure in Pa.

units

coordinates: m in projected UTM zone, data: Pa

required

no

format

net

netamprfile = sfincs_netamprfile.nc

description

FEWS type netcdf meteo input with precipitation in mm/hr.

units

coordinates: m in projected UTM zone, data: mm/hr

required

no

format

net

1.14.5 Structures

thdfile = sfincs.thd

description

With a thin dam flow through certain grid cells is completely blocked (i.e. an infinitely high wall).

units

coordinates: m in projected UTM zone.

required

no

format

asc

weirfile = sfincs.weir

description

Weirs are in principle the same as a thin dam, but then with a certain height (levee).

units

coordinates: m in projected UTM zone, elevation in m above reference level, weir formula coefficient in [-]

required

no

format

asc

drnfile = sfincs.drn**description**

Drainage pumps and culverts are both specified using the same format file, put with a different indication of the type (type=1 is drainage pump, type=2 is culvert).

units

coordinates: m in projected UTM zone, discharges in m³/s.

required

no

format

asc

1.15 Output messages

1.15.1 Interpreting the information on the screen

When running SFINCS, some information will be written to the screen. This consists of what version was run (number/date not always completely up to date), some files that were read in and the number of active points. After ‘Starting computation ...’ appears the initialisation phase is finished.

Once ‘0% complete, Inf s remaining ...’ appears, the model has actually started computing. The following times the percentual progress % is shown, a rough estimate of the time remaining untill completion of the model run is given.

Once ‘—Simulation is finished—’, your model has run succesfully and is writing away the model output files. Additionally some information is written to the screen regarding total runtime, time consumption per section, the average time step, and the maximum occured water depth in the entire computation. If you know the initial water depth, this can give an indication whether the model has encountered instabilities or not. Hereafter SFINCS is closed off, ready to start a new simulation.

Normally SFINCS runs using OpenMP, utilising all computing power of available cores (e.g. all 4). This does not make it efficient to runs multiple SFINCS runs in parallel, it is advised to just run multiple simulations in series.

Example

```
----- Welcome to SFINCS -----

  @@@@ @@@@@@ @ @ @ @ @ @ @ @ @ @ @
  @ @ @ @ @ @ @ @ @ @ @ @ @ @ @ @ @
  @ @ @ @ @ @ @ @ @ @ @ @ @ @ @ @
  @@@@@ @@@@@ @ @ @@@@@ @ @ @@@@@
  @ @ @ @ @ @ @ @ @ @ @ @ @ @ @
  @ @ @ @ @ @ @ @ @ @ @ @ @ @ @
  @@@@@ @ @ @ @ @ @ @ @ @ @ @ @ @

-----

Build-Revision: $Rev: v0.0.1-alpha$
```

(continues on next page)


```

Reading input file ...
Info : Running SFINCS in subgrid mode ...
Reading meteo data ...
Info : Preparing SFINCS grid on regular mesh ...
Reading sfincs.ind ...
Reading sfincs.msk ...
Number of active z points      :      4055
Number of active u/v points    :      7972
Reading sfincs.sbg ...
Reading water level boundaries ...
Reading observation points ...
Initializing output ...

```

0% complete,	- s remaining ...
5% complete,	0.9 s remaining ...
10% complete,	0.9 s remaining ...
15% complete,	0.9 s remaining ...
20% complete,	0.9 s remaining ...
25% complete,	0.8 s remaining ...
30% complete,	0.8 s remaining ...
35% complete,	0.7 s remaining ...
40% complete,	0.7 s remaining ...
45% complete,	0.6 s remaining ...
50% complete,	0.6 s remaining ...
55% complete,	0.5 s remaining ...
60% complete,	0.5 s remaining ...
65% complete,	0.4 s remaining ...
70% complete,	0.4 s remaining ...
75% complete,	0.3 s remaining ...
80% complete,	0.2 s remaining ...
85% complete,	0.2 s remaining ...
90% complete,	0.1 s remaining ...
95% complete,	0.1 s remaining ...
100% complete,	0.0 s remaining ...

```
----- Simulation finished -----
```

1.15. Output messages 79

(continued from previous page)

[illegible]

Total time	:	1.211	
Total simulation time	:	1.198	
Time in input	:	0.013	
Time in boundaries	:	0.042	(3.5%)
Time in momentum	:	0.881	(73.5%)
Time in continuity	:	0.207	(17.3%)
Time in output	:	0.055	(4.6%)

Average time step (s) : 22.031

----- Closing off SFINCS -----

1.15.2 Possible error messages and possible solutions

In case the following message is written to the screen, it means that something in the simulation has gone wrong.

Maximum depth of 100.0 m reached!!! Simulation stopped.

This means that a too large water depth has occurred somewhere in the domain, indicating that some input is probably not optimal.

Possible problems can be:

- The provided elevation file has very rapid changes in elevation, that locally lead to large water level gradients and fluxes. Possible solution: locally smooth the elevation data and provide this as a new depfile
- In general the internal timesteps of SFINCS might be too large. Possible solution: reduce timesteps by supplying a lower value of alpha (e.g. 0.5) or set a low enough value of 'dtmax'.
- Sometimes a simulation might contain too large water depths are start in too deep water. This can potentially create problems as SFINCS is intended as a shallow water model.
- When only forcing discharges in a for the rest entirely dry domain, the initial time steps can be too coarse to account for the needed timesteps when the discharge starts to flow. Possible solution: Make sure that part of the river/domain initially has water (limiting the time step) by specifying either 'zsini' or an 'inifile'.
- When forcing waves, the bzifile time-series might contain too rapid changes in water level, the internal timesteps of SFINCS are too large. Possible solution: reduce timesteps by supplying a lower value of alpha (e.g. 0.5).
- **Tip to check your model:** specify netcdf output and load in the sfincs_map.nc file (e.g. Quickplot, Panoply, Matlab, Python) and have a look at the variables 'zb' and 'msk'. Then you can see how SFINCS has interpreted the provided depfile and mskfile. Does map plots of these variables look weird? Probably something in your input file is not entirely correct!

Besides model instabilities, other recurring problems might be:

- A specified (forcing) file/parameters is not read in > check whether you specified the name (e.g. netamuamvfile = netamuamv.nc) with **ONLY SPACES** in between the keyword and argument. SFINCS does not interpret a mixture of spaces and tabs well. This may cause a file or parameter to be read in as 'none', whereafter this is not used in the model simulation as wanted.

1.16 Output description

1.16.1 Parameters netcdf file global (sfincs_map.nc)

In case of netcdf output, the given parameters mean the following:

x

description

x coordinate of cell centers in projected reference system

standard_name

projection_x_coordinate

units

m in projected reference system

y

description

y coordinate of cell centers in projected reference system

standard_name

projection_y_coordinate

units

m in projected reference system

zb

description

Bed level elevation (in case of subgrid version of SFINCS, this elevation is not used in the model but the sbgfile with subgrid tables is used instead).

standard_name

altitude

units

m above reference level

msk

description

Time-step global map output.

standard_name

land_binary_mask

units

•

time

description

Time of global map output.

standard_name

time

units

seconds since ‘tref’

zs

description

Instantaneous water level per ‘dtout’ timestep, corresponding with netcdf variable ‘time’.

standard_name

sea_surface_height_above_mean_sea_level

units

m above reference level

h

description

Instantaneous water depth per ‘dtout’ timestep, corresponding with netcdf variable ‘time’.

standard_name

depth

units

m

u

description

Instantaneous flow velocity in u-direction per ‘dtout’ timestep, corresponding with netcdf variable ‘time’.

standard_name

sea_water_x_velocity

units

m/s

v

description

Instantaneous flow velocity in v-direction per ‘dtout’ timestep, corresponding with netcdf variable ‘time’.

standard_name

sea_water_y_velocity

units

m/s

timemax

description

Time of global map output per ‘dtmaxout’ timestep.

standard_name

time

units
seconds since ‘tref’

zsmax

description
Maximum water level per ‘dtmaxout’ timestep, only given if dtmaxout>0, corresponding with netcdf variable ‘timemax’.

standard_name
maximum of sea_surface_height_above_mean_sea_level

units
m above reference level

vmax

description
Maximum flow velocity proxy per ‘dtmaxout’ timestep, only given if dtmaxout>0, corresponding with netcdf variable ‘timemax’.

standard_name
maximum_flow_velocity

units
m/

qmax

description
Maximum flow flux proxy per ‘dtmaxout’ timestep, only given if dtmaxout>0, corresponding with netcdf variable ‘timemax’.

standard_name
maximum_flux

units
m²/s

cuminf

description
Cumulative infiltration depth over whole simulation.

units
m

cumprcp

description
Cumulative precipitation depth over whole simulation.

units
m

inp

description
Copy of all the supplied input to SFINCS from ‘sfincs.inp’.

units
•

total_runtime

description

Total model runtime in seconds, as displayed by SFINCS to the screen.

units

s

average_dt

description

Model average timestep in seconds, as displayed by SFINCS to the screen.

units

s

1.16.2 Parameters netcdf file observation points (sfincs_his.nc)

This file is only created if observation points are supplied in the ‘obsfile’, or if weirs/cross-sections are supplied.

point_x

description

x coordinate of interpreted observation points in projected reference system

standard_name

projection_x_coordinate

units

m in projected reference system

point_y

description

y coordinate of interpreted observation points in projected reference system

standard_name

projection_y_coordinate

units

m in projected reference system

station_x

description

x coordinate of specified observation points in projected reference system

standard_name

projection_x_coordinate

units

m in projected reference system

station_y

description

y coordinate of specified observation points in projected reference system

standard_name

projection_y_coordinate

units

m in projected reference system

structure_x

description

x coordinate of snapped location on SFINCS grid of weirs in projected reference system

standard_name

projection_x_coordinate

units

m in projected reference system

structure_y

description

y coordinate of snapped location on SFINCS grid of weirs in projected reference system

standard_name

projection_y_coordinate

units

m in projected reference system

structure_height

description

weir height on snapped location on SFINCS grid of weirs in projected reference system

standard_name

projection_x_coordinate

units

m above reference level

point_zb

description

Bed level elevation of observation points.

standard_name

altitude

units

m above reference level

time

description

Time of his output.

standard_name

time

units

seconds since 'tref'

point_zs

description

Instantaneous water level per 'dthisout' timestep of observation points, corresponding with netcdf variable 'time'.

standard_name

sea_surface_height_above_mean_sea_level

units

m above reference level

point_h

description

Instantaneous water depth per 'dthisout' timestep of observation points, corresponding with netcdf variable 'time'.

standard_name

point_h

units

m

point_u

description

Instantaneous flow velocity in u-direction per 'dthisout' timestep of observation points, corresponding with netcdf variable 'time'.

standard_name

sea_water_x_velocity

units

m/s

point_v

description

Instantaneous flow velocity in v-direction per 'dthisout' timestep of observation points, corresponding with netcdf variable 'time'.

standard_name

sea_water_y_velocity

units

m/s

point_uvmag

description

Instantaneous absolute flow velocity per 'dthisout' timestep of observation points, corresponding with netcdf variable 'time'.

standard_name

sea_water_velocity

units

m/s

point_uvdir

description

Instantaneous absolute flow velocity per 'dthisout' timestep of observation points, corresponding with netcdf variable 'time'.

standard_name

sea_water_velocity_direction

units

degrees wrt north

point_prcp

description

Instantaneous precipitation rate 'dthisout' timestep, corresponding with netcdf variable 'time'.

standard_name

sea_surface_height_above_mean_sea_level

units

m above reference level

point_qinf**description**

Instantaneous infiltration rate per 'dthisout' timestep, corresponding with netcdf variable 'time'.

standard_name

point_qinf

units

m

crosssection_discharge**description**

Discharge through cross-section per 'dthisout' timestep, corresponding with netcdf variable 'time'.

standard_name

discharge

units

m³/s

drainage_discharge**description**

Discharge through drainage structure per 'dthisout' timestep, corresponding with netcdf variable 'time'.

standard_name

discharge

units

m³/s